

**Product Name: ATG5(3C7)Mouse Monoclonal Antibody**  
**Catalog #: AMM07298**



## Summary

<b>Production Name</b>	ATG5(3C7)Mouse Monoclonal Antibody
<b>Description</b>	Mouse Monoclonal Antibody
<b>Host</b>	Mouse
<b>Application</b>	IF-P,IF-F,ICC/IF,WB,IHC-P,IP
<b>Reactivity</b>	Human,Mouse,Rat

## Performance

<b>Conjugation</b>	Unconjugated
<b>Modification</b>	Unmodified
<b>Isotype</b>	IgG
<b>Clonality</b>	Monoclonal
<b>Form</b>	Liquid
<b>Storage</b>	Store at 4°C short term. Aliquot and store at -20°C long term. Avoid freeze/thaw cycles.
<b>Buffer</b>	Liquid in PBS containing 50% glycerol, 0.5% BSA and 0.02% New type preservative N.
<b>Purification</b>	Affinity purification

## Immunogen

<b>Gene Name</b>	ATG5
<b>Alternative Names</b>	Autophagy protein 5 (APG5-like) (Apoptosis-specific protein)
<b>Gene ID</b>	9494.0
<b>SwissProt ID</b>	Q9H1Y0.Recombinant Protein of ATG5

## Application

<b>Dilution Ratio</b>	IF-P/IF-F/ICC/IF 1:50-200, IP 1:50-200, WB 1:500-2000, IHC-P 1:50-300
<b>Molecular Weight</b>	55kDa

## Background

The protein encoded by this gene, in combination with autophagy protein 12, functions as an E1-like activating enzyme in a

**Product Name: ATG5(3C7)Mouse Monoclonal Antibody**  
**Catalog #: AMM07298**

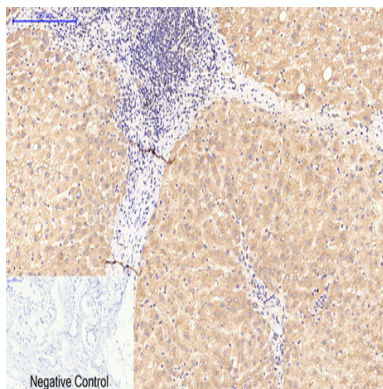


ubiquitin-like conjugating system. The encoded protein is involved in several cellular processes, including autophagic vesicle formation, mitochondrial quality control after oxidative damage, negative regulation of the innate antiviral immune response, lymphocyte development and proliferation, MHC II antigen presentation, adipocyte differentiation, and apoptosis. Several transcript variants encoding different protein isoforms have been found for this gene. [provided by RefSeq, Sep 2015],function:May play an important role in the apoptotic process, possibly within the modified cytoskeleton. Its expression is a relatively late event in the apoptotic process, occurring downstream of caspase activity.,function:Required for autophagy. Conjugates to ATG12 and associates with isolation membrane to form cup-shaped isolation membrane and autophagosome. The conjugate detaches from the membrane immediately before or after autophagosome formation is completed.,induction:By apoptotic stimuli.,PTM:Conjugated to ATG12; which is essential for autophagy, but is not required for association with isolation membrane.,similarity:Belongs to the ATG5 family.,subcellular location:Colocalizes with nonmuscle actin.,tissue specificity:Ubiquitous. The mRNA is present at similar levels in viable and apoptotic cells, whereas the protein is dramatically highly expressed in apoptotic cells.,

## Research Area

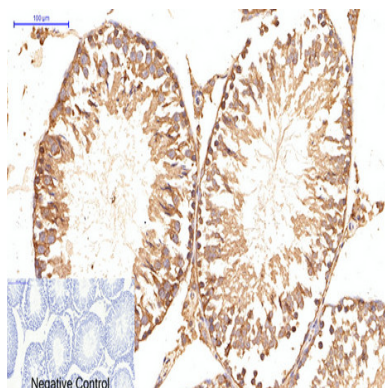
Regulation of autophagy;RIG-I-like receptor;

## Image Data

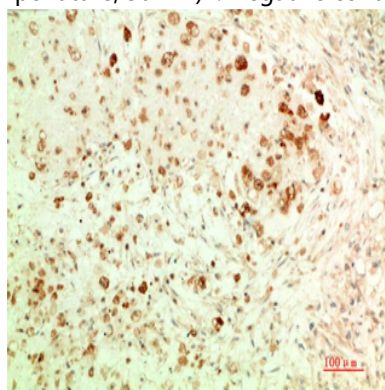


Immunohistochemical analysis of paraffin-embedded Human-breast tissue. 1,ATG5 Mouse Monoclonal Antibody (3C7) was diluted at 1:200 (4°C,overnight) . 2, Sodium citrate pH 6.0 was used for antibody retrieval (>98°C,20min) . 3,Secondary antibody was diluted at 1:200 (room temperature, 30min) . Negative control was used by secondary antibody only.

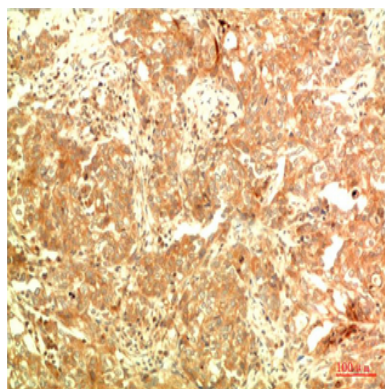
**Product Name: ATG5(3C7)Mouse Monoclonal Antibody**  
**Catalog #: AMM07298**



Immunohistochemical analysis of paraffin-embedded Rat-testis tissue. 1, ATG5 Mouse Monoclonal Antibody (3C7) was diluted at 1:200 (4°C, overnight). 2, Sodium citrate pH 6.0 was used for antibody retrieval (>98°C, 20 min). 3, Secondary antibody was diluted at 1:200 (room temperature, 30 min). Negative control was used by secondary antibody only.

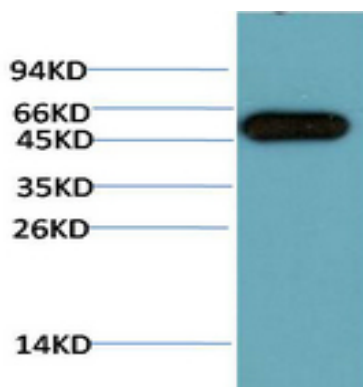


Immunohistochemical analysis of paraffin-embedded Human Ovarian Carcinoma Tissue using ATG5 Mouse mAb diluted at 1:200.



Immunohistochemical analysis of paraffin-embedded Human Breast Carcinoma Tissue using ATG5 Mouse mAb diluted at 1:200.

**Product Name: ATG5(3C7)Mouse Monoclonal Antibody**  
**Catalog #: AMM07298**



Western blot analysis of HeLa Cell Lysate using ATG5 Mouse mAb diluted at 1:10000

### **Note**

For research use only.