

**Product Name: AFP alpha 1 Fetoprotein(17C5)Mouse
Monoclonal Antibody
Catalog #: AMM06666**



Summary

Production Name	AFP alpha 1 Fetoprotein(17C5)Mouse Monoclonal Antibody
Description	Mouse Monoclonal Antibody
Host	Mouse
Application	WB,IHC-P,IF-P,IF-F,ICC/IF
Reactivity	Human

Performance

Conjugation	Unconjugated
Modification	Unmodified
Isotype	IgG
Clonality	Monoclonal
Form	Liquid
Storage	Store at 4°C short term. Aliquot and store at -20°C long term. Avoid freeze/thaw cycles.
Buffer	PBS, pH 7.4, containing 0.5%BSA, 0.02% New type preservative N as Preservative and 50% Glycerol.
Purification	Affinity purification

Immunogen

Gene Name	AFP
Alternative Names	AFP; HPAFP; Alpha-fetoprotein; Alpha-1-fetoprotein; Alpha-fetoglobulin
Gene ID	174.0
SwissProt ID	P02771.Synthetic Peptide of AFP alpha 1 Fetoprotein

Application

Dilution Ratio	WB 1:2000, IF-P/IF-F/ICC/IF 1:200, IHC-P 1:50-300
Molecular Weight	70kDa

**Product Name: AFP alpha 1 Fetoprotein(17C5)Mouse
Monoclonal Antibody
Catalog #: AMM06666**

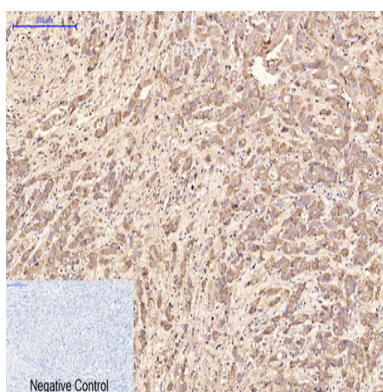


Background

This gene encodes alpha-fetoprotein, a major plasma protein produced by the yolk sac and the liver during fetal life. Alpha-fetoprotein expression in adults is often associated with hepatoma or teratoma. However, hereditary persistence of alpha-fetoprotein may also be found in individuals with no obvious pathology. The protein is thought to be the fetal counterpart of serum albumin, and the alpha-fetoprotein and albumin genes are present in tandem in the same transcriptional orientation on chromosome 4. Alpha-fetoprotein is found in monomeric as well as dimeric and trimeric forms, and binds copper, nickel, fatty acids and bilirubin. The level of alpha-fetoprotein in amniotic fluid is used to measure renal loss of protein to screen for spina bifida and anencephaly. [provided by RefSeq, Jul 2008],developmental stage:Occurs in the plasma of fetuses more than 4 weeks old, reaches the highest levels during the 12th-16th week of gestation, and drops to trace amounts after birth. The serum level in adults is usually less than 40 ng/ml. AFP occurs also at high levels in the plasma and ascitic fluid of adults with hepatoma.,function:Binds copper, nickel, and fatty acids as well as, and bilirubin less well than, serum albumin. Only a small percentage (less than 2%) of the human AFP shows estrogen-binding properties.,online information:Alpha-fetoprotein entry,PTM:Independent studies suggest heterogeneity of the N-terminal sequence of the mature protein and of the cleavage site of the signal sequence.,PTM:Sulfated.,similarity:Belongs to the ALB/AFP/VDB family.,similarity:Contains 3 albumin domains.,subunit:Dimeric and trimeric forms have been found in addition to the monomeric form.,tissue specificity:Plasma. Synthesized by the fetal liver and yolk sac.,

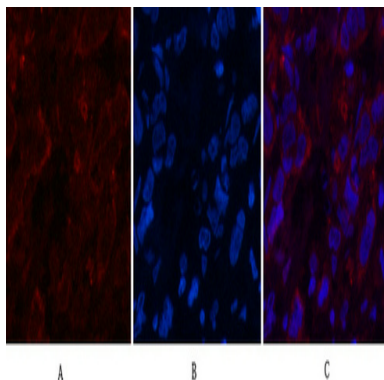
Research Area

Image Data

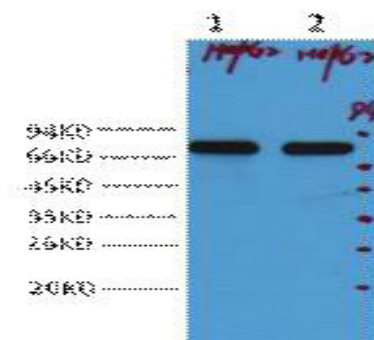


Immunohistochemical analysis of paraffin-embedded Human-breast-cancer tissue. 1,AFP alpha 1 Fetoprotein Monoclonal Antibody (17C5) was diluted at 1:200 (4°C,overnight) . 2, Sodium citrate pH 6.0 was used for antibody retrieval (>98°C,20min) . 3,Secondary antibody was diluted at 1:200 (room temperature, 30min) . Negative control was used by secondary antibody only.

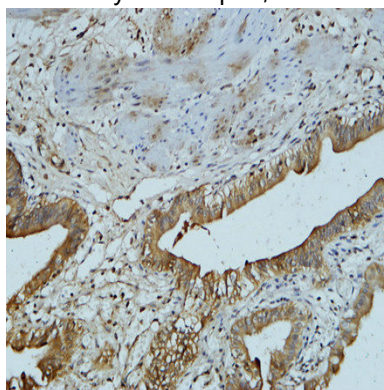
**Product Name: AFP alpha 1 Fetoprotein(17C5)Mouse
Monoclonal Antibody
Catalog #: AMM06666**



Immunofluorescence analysis of Human-breast-cancer tissue. 1,AFP alpha 1 Fetoprotein Monoclonal Antibody (17C5) (red) was diluted at 1:200 (4°C,overnight) . 2, Cy3 labeled Secondary antibody was diluted at 1:300 (room temperature, 50min) .3, Picture B: DAPI (blue) 10min. Picture A:Target. Picture B: DAPI. Picture C: merge of A+B

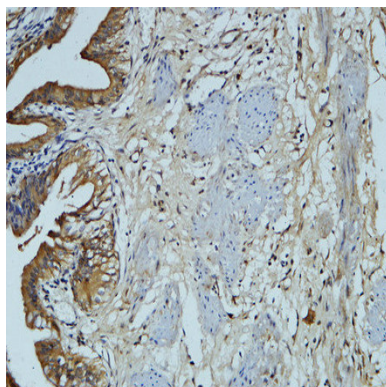


Western blot analysis of HepG2, diluted at 1:2,000.

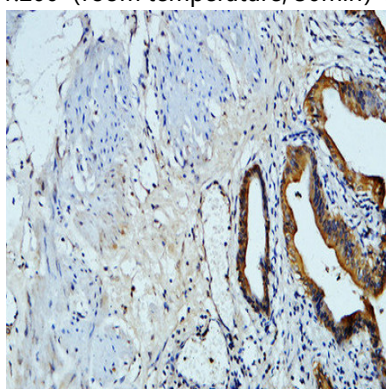


Immunohistochemical analysis of paraffin-embedded Human gallbladder. 1, Antibody was diluted at 1:100 (4°,overnight) . 2, High-pressure and temperature EDTA, pH8.0 was used for antigen retrieval. 3,Secondary antibody was diluted at 1:200 (room temperature, 30min) .

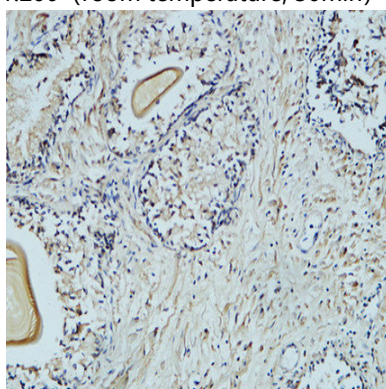
**Product Name: AFP alpha 1 Fetoprotein(17C5)Mouse
Monoclonal Antibody
Catalog #: AMM06666**



Immunohistochemical analysis of paraffin-embedded Human gallbladder. 1, Antibody was diluted at 1:100 (4°,overnight) .
2, High-pressure and temperature EDTA, pH8.0 was used for antigen retrieval. 3,Secondary antibody was diluted at
1:200 (room temperature, 30min) .

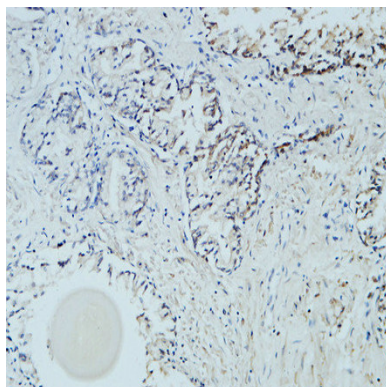


Immunohistochemical analysis of paraffin-embedded Human gallbladder. 1, Antibody was diluted at 1:100 (4°,overnight) .
2, High-pressure and temperature EDTA, pH8.0 was used for antigen retrieval. 3,Secondary antibody was diluted at
1:200 (room temperature, 30min) .

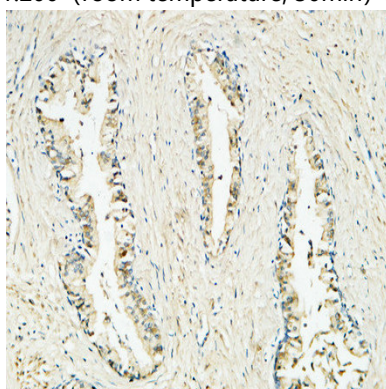


Immunohistochemical analysis of paraffin-embedded Human Prostate. 1, Antibody was diluted at 1:100 (4°,overnight) . 2,
High-pressure and temperature EDTA, pH8.0 was used for antigen retrieval. 3,Secondary antibody was diluted at
1:200 (room temperature, 30min) .

**Product Name: AFP alpha 1 Fetoprotein(17C5)Mouse
Monoclonal Antibody
Catalog #: AMM06666**



Immunohistochemical analysis of paraffin-embedded Human Prostate. 1, Antibody was diluted at 1:100 (4°,overnight) . 2, High-pressure and temperature EDTA, pH8.0 was used for antigen retrieval. 3,Secondary antibody was diluted at 1:200 (room temperature, 30min) .



Immunohistochemical analysis of paraffin-embedded Human Prostate. 1, Antibody was diluted at 1:100 (4°,overnight) . 2, High-pressure and temperature EDTA, pH8.0 was used for antigen retrieval. 3,Secondary antibody was diluted at 1:200 (room temperature, 30min) .

Note

For research use only.