

**Product Name: α -tubulin(Acetyl Lys40)(5H5)Mouse
Monoclonal Antibody
Catalog #: AMM06271**



Summary

Production Name	α -tubulin(Acetyl Lys40)(5H5)Mouse Monoclonal Antibody
Description	Mouse Monoclonal Antibody
Host	Mouse
Application	WB,IHC-P,IF-P,IF-F,ICC/IF
Reactivity	Human,Rat,Mouse

Performance

Conjugation	Unconjugated
Modification	Acetyl Antibody
Isotype	IgG
Clonality	Monoclonal
Form	Liquid
Storage	Store at 4°C short term. Aliquot and store at -20°C long term. Avoid freeze/thaw cycles.
Buffer	Liquid in PBS containing 50% glycerol, 0.5% BSA and 0.02% New type preservative N.
Purification	Affinity purification

Immunogen

Gene Name	TUBA1B
Alternative Names	Tubulin alpha-1B chain (Alpha-tubulin ubiquitous;Tubulin K-alpha-1;Tubulin alpha-ubiquitous chain)
Gene ID	7277.0
SwissProt ID	P68363.Synthetic Peptide of α -tubulin (Acetyl Lys40)

Application

Dilution Ratio	WB 1:1000-2000, IHC-P 1:100-200, IF-P/IF-F/ICC/IF 1:50-200
Molecular Weight	52kDa

**Product Name: α -tubulin(Acetyl Lys40)(5H5)Mouse
Monoclonal Antibody
Catalog #: AMM06271**



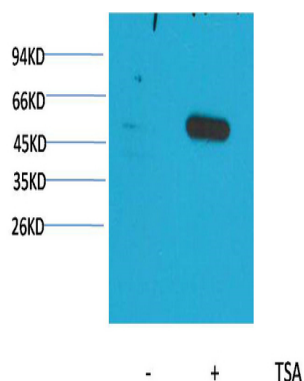
Background

function: Tubulin is the major constituent of microtubules. It binds two moles of GTP, one at an exchangeable site on the beta chain and one at a non-exchangeable site on the alpha-chain., PTM: Undergoes a tyrosination/detyrosination cycle, the cyclic removal and re-addition of a C-terminal tyrosine residue by the enzymes tubulin tyrosine carboxypeptidase (TTCP) and tubulin tyrosine ligase (TTL), respectively., similarity: Belongs to the tubulin family., subunit: Dimer of alpha and beta chains., function: Tubulin is the major constituent of microtubules. It binds two moles of GTP, one at an exchangeable site on the beta chain and one at a non-exchangeable site on the alpha-chain., PTM: Undergoes a tyrosination/detyrosination cycle, the cyclic removal and re-addition of a C-terminal tyrosine residue by the enzymes tubulin tyrosine carboxypeptidase (TTCP) and tubulin tyrosine ligase (TTL), respectively., similarity: Belongs to the tubulin family., subunit: Dimer of alpha and beta chains.,

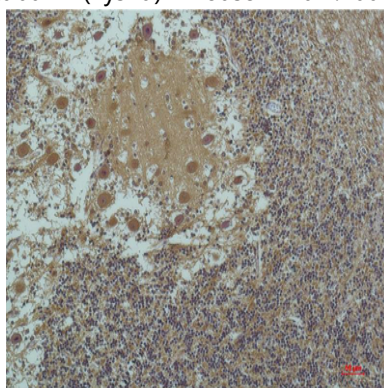
Research Area

Gap junction; Pathogenic Escherichia coli infection;

Image Data



Western blot analysis of extracts from Hela cells, untreated (-) or treated with TSA (1 μ M, 18 hr; +), using Acetyl- α -tubulin (Lys40) Mouse mAb 1:2000.



Immunohistochemical analysis of paraffin-embedded Human Brain Tissue using α -tubulin (Acetyl Lys40) Mouse mAb

**Product Name: α -tubulin(Acetyl Lys40)(5H5)Mouse
Monoclonal Antibody
Catalog #: AMM06271**



diluted at 1:200.

Note

For research use only.