

**Product Name: α -tubulin(Acetyl Lys40)(4A8)Mouse
Monoclonal Antibody
Catalog #: AMM06270**



Summary

Production Name	α -tubulin(Acetyl Lys40)(4A8)Mouse Monoclonal Antibody
Description	Mouse Monoclonal Antibody
Host	Mouse
Application	WB,IF-P,IF-F,ICC/IF,IHC-P
Reactivity	Human,Rat,Mouse,Drosophila

Performance

Conjugation	Unconjugated
Modification	Acetyl Antibody
Isotype	IgG
Clonality	Monoclonal
Form	Liquid
Storage	Store at 4°C short term. Aliquot and store at -20°C long term. Avoid freeze/thaw cycles.
Buffer	Liquid in PBS containing 50% glycerol, 0.5% BSA and 0.02% New type preservative N.
Purification	Affinity purification

Immunogen

Gene Name	TUBA1B
Alternative Names	Tubulin alpha-1B chain (Alpha-tubulin ubiquitous) (Tubulin K-alpha-1) (Tubulin alpha-ubiquitous chain)
Gene ID	7277.0
SwissProt ID	P68363.Synthetic Peptide of α -tubulin (Acetyl Lys40)

Application

Dilution Ratio	WB 1:1000-2000, IHC-P 1:50-100, IF-P/IF-F/ICC/IF 1:200
Molecular Weight	52kDa

**Product Name: α -tubulin(Acetyl Lys40)(4A8)Mouse
Monoclonal Antibody
Catalog #: AMM06270**



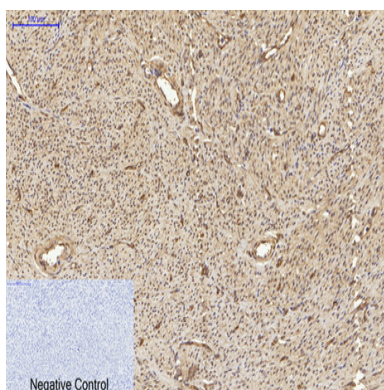
Background

function:Tubulin is the major constituent of microtubules. It binds two moles of GTP, one at an exchangeable site on the beta chain and one at a non-exchangeable site on the alpha-chain.,PTM:Undergoes a tyrosination/detyrosination cycle, the cyclic removal and re-addition of a C-terminal tyrosine residue by the enzymes tubulin tyrosine carboxypeptidase (TTCP) and tubulin tyrosine ligase (TTL), respectively.,similarity:Belongs to the tubulin family.,subunit:Dimer of alpha and beta chains.,function:Tubulin is the major constituent of microtubules. It binds two moles of GTP, one at an exchangeable site on the beta chain and one at a non-exchangeable site on the alpha-chain.,PTM:Undergoes a tyrosination/detyrosination cycle, the cyclic removal and re-addition of a C-terminal tyrosine residue by the enzymes tubulin tyrosine carboxypeptidase (TTCP) and tubulin tyrosine ligase (TTL), respectively.,similarity:Belongs to the tubulin family.,subunit:Dimer of alpha and beta chains.,

Research Area

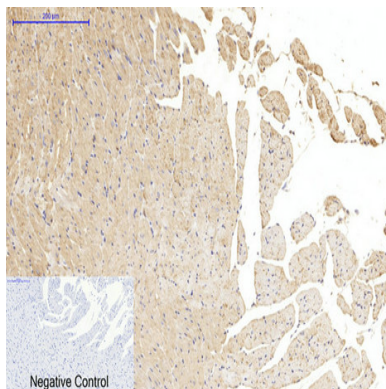
Gap junction;Pathogenic Escherichia coli infection;

Image Data

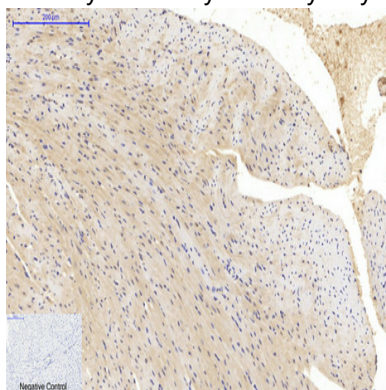


Immunohistochemical analysis of paraffin-embedded Human-uterus tissue. 1, α -tubulin (Acetyl Lys40) Monoclonal Antibody (4A8) was diluted at 1:200 (4°C,overnight) . 2, Sodium citrate pH 6.0 was used for antibody retrieval (>98°C,20min) . 3,Secondary antibody was diluted at 1:200 (room temperature, 30min) . Negative control was used by secondary antibody only.

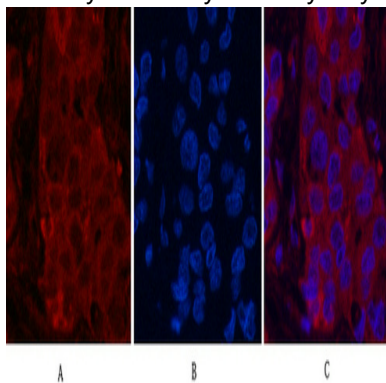
**Product Name: α -tubulin(Acetyl Lys40)(4A8)Mouse
Monoclonal Antibody
Catalog #: AMM06270**



Immunohistochemical analysis of paraffin-embedded Rat-heart tissue. 1, α -tubulin (Acetyl Lys40) Monoclonal Antibody (4A8) was diluted at 1:200 (4°C,overnight) . 2, Sodium citrate pH 6.0 was used for antibody retrieval (>98°C,20min) . 3,Secondary antibody was diluted at 1:200 (room tempeRature, 30min) . Negative control was used by secondary antibody only.



Immunohistochemical analysis of paraffin-embedded Mouse-heart tissue. 1, α -tubulin (Acetyl Lys40) Monoclonal Antibody (4A8) was diluted at 1:200 (4°C,overnight) . 2, Sodium citrate pH 6.0 was used for antibody retrieval (>98°C,20min) . 3,Secondary antibody was diluted at 1:200 (room tempeRature, 30min) . Negative control was used by secondary antibody only.

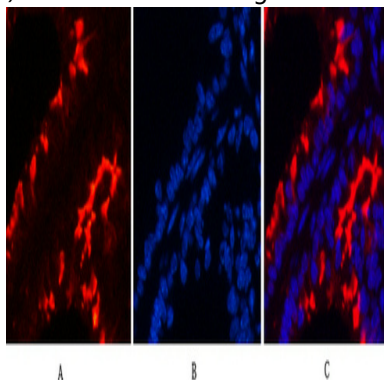


Immunofluorescence analysis of Human-liver-cancer tissue. 1, α -tubulin (Acetyl Lys40) Monoclonal Antibody (4A8) (red) was diluted at 1:200 (4°C,overnight) . 2, Cy3 labeled Secondary antibody was diluted at 1:300 (room temperature,

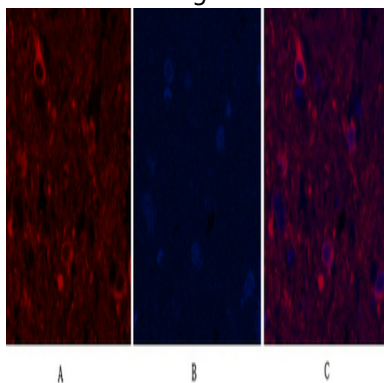
**Product Name: α -tubulin(Acetyl Lys40)(4A8)Mouse
Monoclonal Antibody
Catalog #: AMM06270**



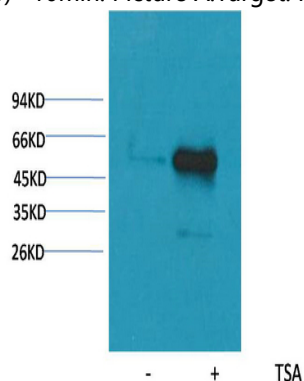
50min) .3, Picture B: DAPI (blue) 10min. Picture A:Target. Picture B: DAPI. Picture C: merge of A+B



Immunofluorescence analysis of Mouse-lung tissue. 1, α -tubulin (Acetyl Lys40) Monoclonal Antibody (4A8) (red) was diluted at 1:200 (4°C,overnight) . 2, Cy3 labeled Secondary antibody was diluted at 1:300 (room temperature, 50min) .3, Picture B: DAPI (blue) 10min. Picture A:Target. Picture B: DAPI. Picture C: merge of A+B

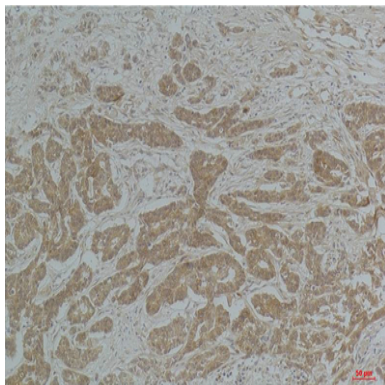


Immunofluorescence analysis of Rat-spinal-cord tissue. 1, α -tubulin (Acetyl Lys40) Monoclonal Antibody (4A8) (red) was diluted at 1:200 (4°C,overnight) . 2, Cy3 labeled Secondary antibody was diluted at 1:300 (room temperature, 50min) .3, Picture B: DAPI (blue) 10min. Picture A:Target. Picture B: DAPI. Picture C: merge of A+B

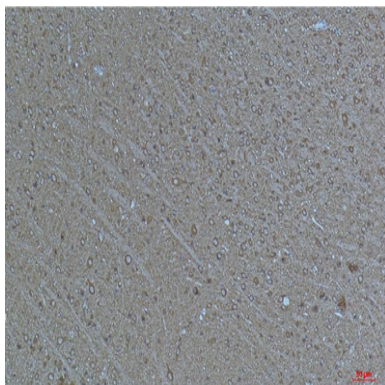


Western blot analysis of extracts from Hela cells, untreated (-) or treated with TSA (1 μ M, 18 hr; +) , using Acetyl- α -tubulin (Lys40) Mouse mAb 1:2000.

**Product Name: α -tubulin(Acetyl Lys40)(4A8)Mouse
Monoclonal Antibody
Catalog #: AMM06270**



Immunohistochemical analysis of paraffin-embedded Human Breast Carcinoma using α -tubulin (Acetyl Lys40) Mouse mAb diluted at 1:200.



Immunohistochemical analysis of paraffin-embedded Mouse Brain Tissue using α -tubulin (Acetyl Lys40) Mouse mAb diluted at 1:200.

Note

For research use only.