

**Product Name: Placental Alkaline Phosphatase Mouse  
Monoclonal Antibody  
Catalog #: AMM03706**

---



## Summary

|                        |  |
|------------------------|--|
| <b>Production Name</b> | Placental Alkaline Phosphatase Mouse Monoclonal Antibody |
| <b>Description</b>     | Mouse Monoclonal Antibody                                |
| <b>Host</b>            | Mouse  |
| <b>Application</b>     | WB,IHC-P   |
| <b>Reactivity</b>      | Human  |

## Performance

|                     |  |
|---------------------|--|
| <b>Conjugation</b>  | Unconjugated   |
| <b>Modification</b> | Unmodified   |
| <b>Isotype</b>      | IgG2b  |
| <b>Clonality</b>    | Monoclonal   |
| <b>Form</b>         | Liquid   |
| <b>Storage</b>      | Store at 4°C short term. Aliquot and store at -20°C long term. Avoid freeze/thaw cycles. |
| <b>Buffer</b>       | Ascitic fluid containing 0.03% sodium azide.   |
| <b>Purification</b> | Ascitic Fluid  |

## Immunogen

|                          |  |
|--------------------------|--|
| <b>Gene Name</b>         | ALPP   |
| <b>Alternative Names</b> | ALPP; PLAP; Alkaline phosphatase; placental type; Alkaline phosphatase Regan isozyme; Placental alkaline phosphatase 1; PLAP-1 |
| <b>Gene ID</b>           | 250  |
| <b>SwissProt ID</b>      | P05187.  |

## Application

|                         |  |
|-------------------------|--|
| <b>Dilution Ratio</b>   | WB: 1:500-1:1000 IHC: 1:50-1:100           |
| <b>Molecular Weight</b> | Calculated MW: 58 kDa; Observed MW: 70 kDa |

**Product Name: Placental Alkaline Phosphatase Mouse  
Monoclonal Antibody  
Catalog #: AMM03706**



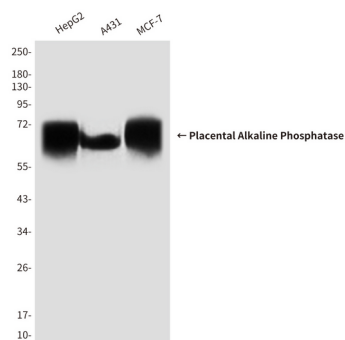
## Background

PLAP may assist in guiding migratory cells and transporting specific molecules, such as fatty acids and immunoglobulins, across the plasma membrane. The three tissue-specific APs identified in human, PLAP, germ cell AP (GCAP) and intestinal AP, are 90-98% homologous and their genes are clustered on chromosome 2q.

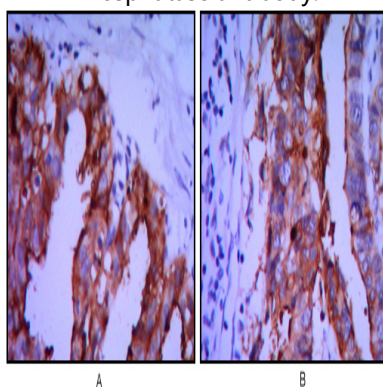
## Research Area

Tags & Cell Markers

## Image Data



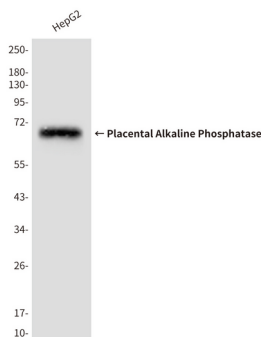
Western blot analysis of Placental Alkaline Phosphatase in HepG2 , A431 and MCF-7 lysates using Placental Alkaline Phosphatase antibody.



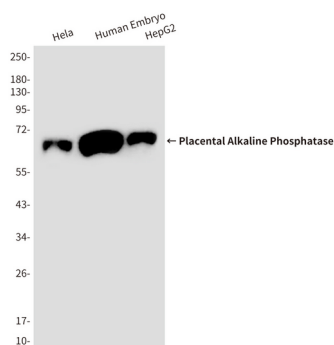
Immunohistochemical analysis of paraffin-embedded Human tonsils using Placental Alkaline Phosphatase antibody, with DAB staining. High-pressure and temperature Sodium Citrate pH 6.0 was used for antigen retrieval.

**Product Name: Placental Alkaline Phosphatase Mouse  
Monoclonal Antibody  
Catalog #: AMM03706**

---



Western blot analysis of Placental Alkaline Phosphatase in HepG2 lysates using Placental Alkaline Phosphatase antibody



Western blot analysis of Placental Alkaline Phosphatase in HeLa, Human Embryo, HepG2 lysates using Placental Alkaline Phosphatase antibody.

**Note**

For research use only.