

Product Name: LIN28A (9G2) Mouse Monoclonal Antibody
Catalog #: AMM03705

Summary

Production Name	LIN28A (9G2) Mouse Monoclonal Antibody
Description	Mouse Monoclonal Antibody
Host	Mouse
Application	WB, ICC/IF
Reactivity	Human

Performance

Conjugation	Unconjugated
Modification	Unmodified
Isotype	IgG1
Clonality	Monoclonal
Form	Liquid
Storage	Store at 4°C short term. Aliquot and store at -20°C long term. Avoid freeze/thaw cycles.
Buffer	Ascitic fluid containing 0.03% sodium azide.
Purification	Ascitic Fluid

Immunogen

Gene Name	LIN28A
Alternative Names	CSDD1; FLJ12457; LIN 28; Lin-28A; LIN28; LIN28A; LN28A_HUMAN; Protein lin-28 homolog A; ZCCHC1; Zinc finger CCHC domain-containing protein 1.
Gene ID	79727
SwissProt ID	Q9H9Z2.

Application

Dilution Ratio	WB: 1:500-1:1000 IF: 1:50-1:200
Molecular Weight	Calculated MW: 23 kDa; Observed MW: 23 kDa

Product Name: LIN28A (9G2) Mouse Monoclonal Antibody
Catalog #: AMM03705

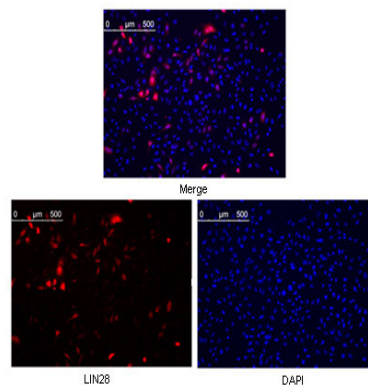
Background

Involved in the timing of developmental events and choice of stage specific cell fates. Acts as a suppressor of microRNA (miRNA) biogenesis by specifically binding the precursor let-7 (pre-let-7), a miRNA precursor. Acts by binding pre-let-7 and recruiting ZCCHC11/TUT4 uridylyltransferase, leading to the terminal uridylation of pre-let-7.

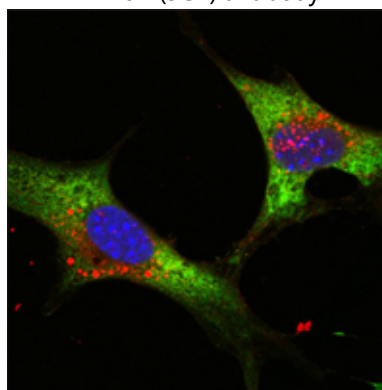
Research Area

Epigenetics and Nuclear Signaling

Image Data

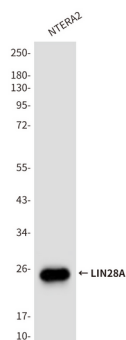


Immunofluorescence analysis of LIN28A (9G2) in HeLa cells were transfected with pMX construct of Human LIN28 using LIN28A (9G2) antibody



Immunofluorescence analysis of LIN28A (9G2) in NTERA-2 cells using LIN28A (9G2) antibody (green). Blue: DAPI fluorescent DNA dye.

Product Name: LIN28A (9G2) Mouse Monoclonal Antibody
Catalog #: AMM03705



Western blot analysis of LIN28A (9G2) in NTERA-2 lysates using LIN28A (9G2) antibody.

Note

For research use only.