

Product Name: MCM2 (2B5) Mouse Monoclonal Antibody
Catalog #: AMM03697

Summary

Production Name	MCM2 (2B5) Mouse Monoclonal Antibody
Description	Mouse Monoclonal Antibody
Host	Mouse
Application	WB,IHC-F,IHC-P,ICC/IF,FC,IP
Reactivity	Human,Mouse

Performance

Conjugation	Unconjugated
Modification	Unmodified
Isotype	IgG1
Clonality	Monoclonal
Form	Liquid
Storage	Store at 4°C short term. Aliquot and store at -20°C long term. Avoid freeze/thaw cycles.
Buffer	Liquid in PBS containing 50% glycerol, 0.5% BSA and 0.02% sodium azide, pH 7.3.
Purification	Ascitic Fluid

Immunogen

Gene Name	MCM2
Alternative Names	MCM2; BM28; CCNL1; CDCL1; KIAA0030; DNA replication licensing factor MCM2; Minichromosome maintenance protein 2 homolog; Nuclear protein BM28
Gene ID	4171
SwissProt ID	P49736.

Application

Dilution Ratio	WB: 1:500-1:1000 IHC: 1:50-1:100 IF: 1:50-1:200 IP: 1:20 FC: 1:50-1:100
Molecular Weight	Calculated MW: 102 kDa; Observed MW: 125 kDa

Product Name: MCM2 (2B5) Mouse Monoclonal Antibody
Catalog #: AMM03697

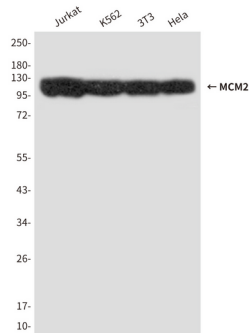
Background

The protein encoded by this gene is one of the highly conserved mini-chromosome maintenance proteins (MCM) that are involved in the initiation of eukaryotic genome replication. The hexameric protein complex formed by MCM proteins is a key component of the pre-replication complex (pre_RC) and may be involved in the formation of replication forks and in the recruitment of other DNA replication related proteins. This protein forms a complex with MCM4, 6, and 7, and has been shown to regulate the helicase activity of the complex. This protein is phosphorylated, and thus regulated by, protein kinases CDC2 and CDC7. Multiple alternatively spliced transcript variants have been found, but the full-length nature of some variants has not been defined. [provided by RefSeq, Oct 2012]

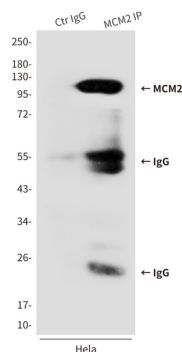
Research Area

Epigenetics and Nuclear Signaling

Image Data

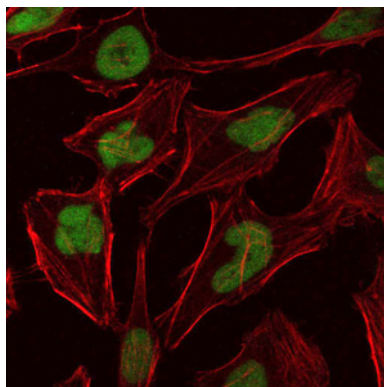


Western blot analysis of MCM2 in Jurkat, K562, 3T3 and HeLa lysates using MCM2 antibody.

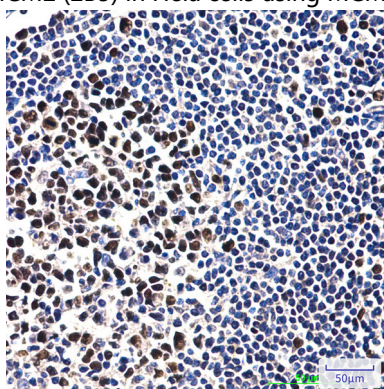


Immunoprecipitation analysis of MCM2 (2B5) in HeLa lysates using MCM2 antibody.

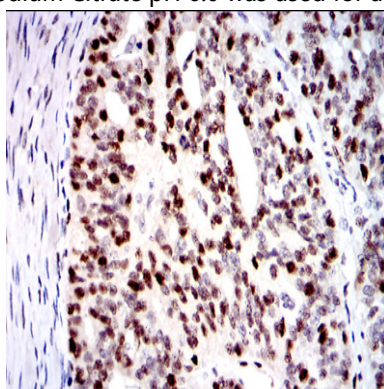
Product Name: MCM2 (2B5) Mouse Monoclonal Antibody
Catalog #: AMM03697



Immunofluorescence analysis of MCM2 (2B5) in Hela cells using MCM2 antibody(green),and DAPI (blue).

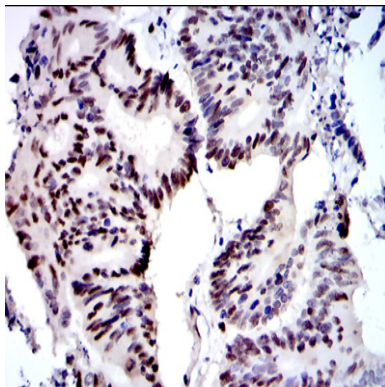


Immunohistochemistry analysis of paraffin-embedded Human tonsil tissue using MCM2 (2B5) antibody.High-pressure and temperature Sodium Citrate pH 6.0 was used for antigen retrieval.



Immunohistochemistry analysis of paraffin-embedded ovarian cancer tissues using MCM2 (2B5) antibody.High-pressure and temperature Sodium Citrate pH 6.0 was used for antigen retrieval.

Product Name: MCM2 (2B5) Mouse Monoclonal Antibody
Catalog #: AMM03697



Immunohistochemistry analysis of paraffin-embedded colon cancer tissues using MCM2 antibody. High-pressure and temperature Sodium Citrate pH 6.0 was used for antigen retrieval.

Note

For research use only.