

**Product Name: ABCB5 (8D2) Mouse Monoclonal Antibody**  
**Catalog #: AMM03695**

---

## Summary

<b>Production Name</b>	ABCB5 (8D2) Mouse Monoclonal Antibody
<b>Description</b>	Mouse Monoclonal Antibody
<b>Host</b>	Mouse
<b>Application</b>	WB, ICC/IF
<b>Reactivity</b>	Human

## Performance

<b>Conjugation</b>	Unconjugated
<b>Modification</b>	Unmodified
<b>Isotype</b>	IgG1
<b>Clonality</b>	Monoclonal
<b>Form</b>	Liquid
<b>Storage</b>	Store at 4°C short term. Aliquot and store at -20°C long term. Avoid freeze/thaw cycles.
<b>Buffer</b>	Liquid in PBS containing 50% glycerol, 0.5% BSA and 0.02% sodium azide, pH 7.3.
<b>Purification</b>	Affinity Purification

## Immunogen

<b>Gene Name</b>	ABCB5
<b>Alternative Names</b>	ABCB5 P-gp; ATP binding cassette sub family B (MDR/TAP) member 5; P glycoprotein
<b>Gene ID</b>	340273
<b>SwissProt ID</b>	Q2M3G0.

## Application

<b>Dilution Ratio</b>	WB: 1:500-1:1000 IF: 1:50-1:200
<b>Molecular Weight</b>	Calculated MW: 139 kDa; Observed MW: 90 kDa

**Product Name: ABCB5 (8D2) Mouse Monoclonal Antibody**  
**Catalog #: AMM03695**

---

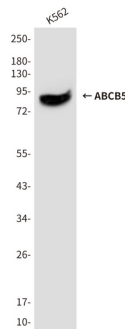
## Background

Drug efflux transporter present in a number of stem cells that acts as a regulator of cellular differentiation. Able to mediate efflux from cells of the rhodamine dye and of the therapeutic drug doxorubicin. Specifically present in limbal stem cells, where it plays a key role in corneal development and repair.

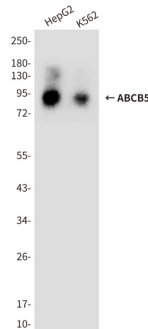
## Research Area

Signal Transduction

## Image Data



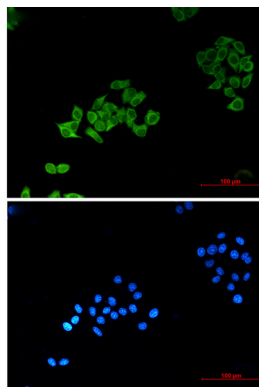
Western blot analysis of ABCB5 in K562 lysates using ABCB5 antibody.



Western blot analysis of ABCB5 (8D2) in HepG2, K562 lysates using ABCB5 (8D2) antibody.

**Product Name: ABCB5 (8D2) Mouse Monoclonal Antibody**  
**Catalog #: AMM03695**

---



Immunocytochemistry analysis of ABCB5 (8D2) (green) in Hela using ABCB5 (8D2) antibody ,and DAPI(blue)

### **Note**

For research use only.