

**Product Name: HP1 gamma (5G10) Mouse Monoclonal Antibody**  
**Catalog #: AMM03640**



## Summary

<b>Production Name</b>	HP1 gamma (5G10) Mouse Monoclonal Antibody
<b>Description</b>	Mouse Monoclonal Antibody
<b>Host</b>	Mouse
<b>Application</b>	WB,IHC-F,IHC-P,ICC/IF,IP
<b>Reactivity</b>	Mouse,Human,Monkey,Hamster,Rat

## Performance

<b>Conjugation</b>	Unconjugated
<b>Modification</b>	Unmodified
<b>Isotype</b>	IgG1
<b>Clonality</b>	Monoclonal
<b>Form</b>	Liquid
<b>Storage</b>	Store at 4°C short term. Aliquot and store at -20°C long term. Avoid freeze/thaw cycles.
<b>Buffer</b>	Liquid in PBS containing 50% glycerol, 0.5% BSA and 0.02% sodium azide, pH 7.3.
<b>Purification</b>	Affinity Purification

## Immunogen

<b>Gene Name</b>	CBX3
<b>Alternative Names</b>	CBX3; Chromobox protein homolog 3; HECH; Heterochromatin protein 1 homolog gamma; HP1 gamma; Modifier 2 protein
<b>Gene ID</b>	11335
<b>SwissProt ID</b>	Q13185.

## Application

<b>Dilution Ratio</b>	WB: 1:500-1:1000 IHC: 1:50-1:100 IF: 1:50-1:200 IP: 1:20
<b>Molecular Weight</b>	Calculated MW: 21 kDa; Observed MW: 21 kDa

**Product Name: HP1 gamma (5G10) Mouse Monoclonal Antibody**  
**Catalog #: AMM03640**



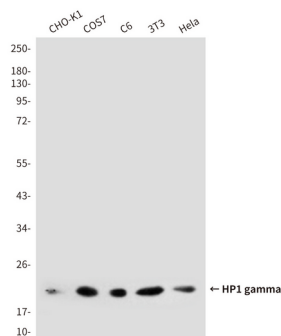
## Background

Recognizes and binds histone H3 tails methylated at 'Lys-9', leading to epigenetic repression. May contribute to the association of the heterochromatin with the inner nuclear membrane through its interaction with lamin B receptor (LBR). Involved in the formation of functional kinetochore through interaction with MIS12 complex proteins.

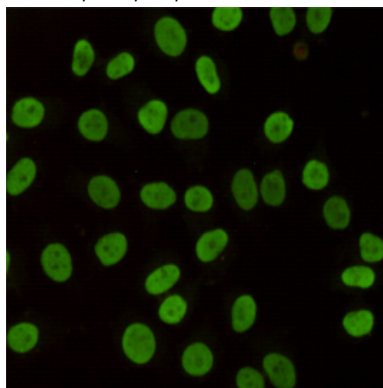
## Research Area

Epigenetics and Nuclear Signaling

## Image Data

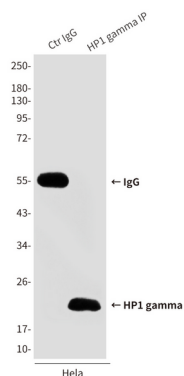


Western blot analysis of HP1gamma in HeLa, 3T3, C6, COS7 and CHO-K1 lysates using HP1 gamma antibody.

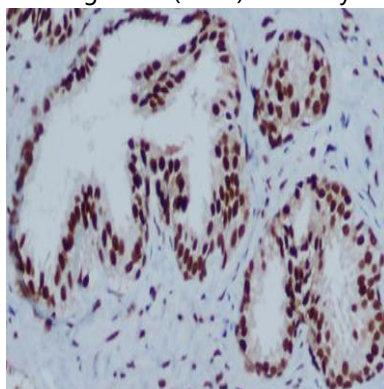


Immunocytochemistry analysis of HP1 gamma (5G10) in HeLa using HP1 gamma antibody.

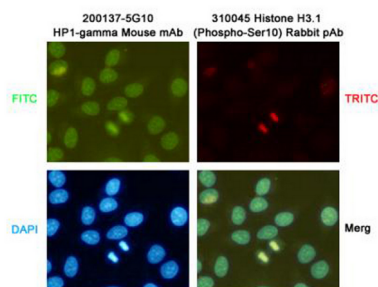
**Product Name: HP1 gamma (5G10) Mouse Monoclonal Antibody**  
**Catalog #: AMM03640**



Immunoprecipitation analysis of HP1 gamma (5G10) in HeLa lysates using HP1gamma antibody.



Immunohistochemistry analysis of paraffin-embedded Prostate Cancer using HP1 gamma antibody. High-pressure and temperature Sodium Citrate pH 6.0 was used for antigen retrieval.



Immunocytochemistry analysis of HP1 gamma in HeLa using HP1gamma (2001375G10) antibody(green) and Histone H3.1 (Phospho-Ser10)(310045)antibody(red). DAPI (blue).

## Note

For research use only.