

**Product Name: STAT3 (6H10) Mouse Monoclonal Antibody**  
**Catalog #: AMM03617**

---

## Summary

<b>Production Name</b>	STAT3 (6H10) Mouse Monoclonal Antibody
<b>Description</b>	Mouse Monoclonal Antibody
<b>Host</b>	Mouse
<b>Application</b>	WB,IHC-P
<b>Reactivity</b>	Human,Rat,Mouse

## Performance

<b>Conjugation</b>	Unconjugated
<b>Modification</b>	Unmodified
<b>Isotype</b>	IgG1
<b>Clonality</b>	Monoclonal
<b>Form</b>	Liquid
<b>Storage</b>	Store at 4°C short term. Aliquot and store at -20°C long term. Avoid freeze/thaw cycles.
<b>Buffer</b>	Liquid in PBS containing 50% glycerol, 0.5% BSA and 0.02% sodium azide, pH 7.3.
<b>Purification</b>	Affinity Purification

## Immunogen

<b>Gene Name</b>	STAT3
<b>Alternative Names</b>	STAT3; APRE; Signal transducer and activator of transcription 3; Acute-phase response factor
<b>Gene ID</b>	6774
<b>SwissProt ID</b>	P40763.

## Application

<b>Dilution Ratio</b>	WB: 1:500-1:1000 IHC: 1:50-1:100
<b>Molecular Weight</b>	Calculated MW: 88 kDa; Observed MW: 79,86 kDa

**Product Name: STAT3 (6H10) Mouse Monoclonal Antibody**  
**Catalog #: AMM03617**

---



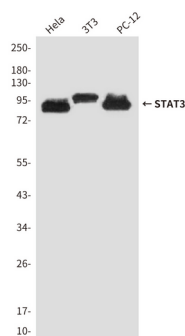
## Background

The protein encoded by this gene is a member of the STAT protein family. In response to cytokines and growth factors, STAT family members are phosphorylated by the receptor associated kinases, and then form homo- or heterodimers that translocate to the cell nucleus where they act as transcription activators.

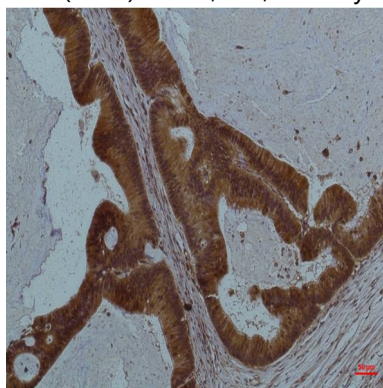
## Research Area

Signal Transduction

## Image Data



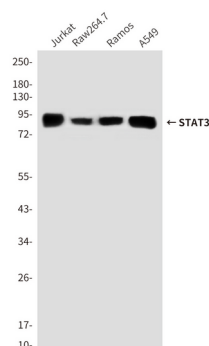
Western blot analysis of STAT3 (6H10) in HeLa, 3T3, PC-12 lysates using STAT3 antibody.



Immunohistochemistry analysis of paraffin-embedded Human Colon Carcinoma using STAT3 antibody. High-pressure and temperature Sodium Citrate pH 6.0 was used for antigen retrieval.

**Product Name: STAT3 (6H10) Mouse Monoclonal Antibody**  
**Catalog #: AMM03617**

---



Western blot analysis of STAT3 (6H10) in Jurkat, Raw264.7, Ramos, A549 lysates using Stat3 (6H1) antibody.

### **Note**

For research use only.