

Product Name: beta Catenin (7E2) Mouse Monoclonal Antibody
Catalog #: AMM03594



Summary

Production Name	beta Catenin (7E2) Mouse Monoclonal Antibody
Description	Mouse Monoclonal Antibody
Host	Mouse
Application	WB,IHC-P
Reactivity	Human,Mouse,Rat

Performance

Conjugation	Unconjugated
Modification	Unmodified
Isotype	IgG1
Clonality	Monoclonal
Form	Liquid
Storage	Store at 4°C short term. Aliquot and store at -20°C long term. Avoid freeze/thaw cycles.
Buffer	Liquid in PBS containing 50% glycerol, 0.5% BSA and 0.02% sodium azide, pH 7.3.
Purification	Affinity Purification

Immunogen

Gene Name	CTNNB1
Alternative Names	CTNNB1; CTNNB; OK/SW-cl.35; Catenin beta-1; Beta-catenin
Gene ID	1499
SwissProt ID	P35222.

Application

Dilution Ratio	WB: 1:500-1:1000 IHC: 1:50-1:100
Molecular Weight	Calculated MW: 85 kDa; Observed MW: 92 kDa

Background

Product Name: beta Catenin (7E2) Mouse Monoclonal Antibody
Catalog #: AMM03594

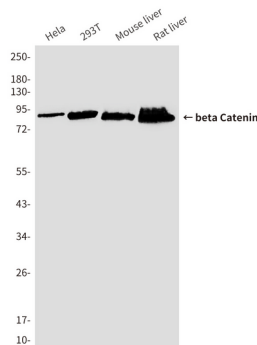


Beta-catenin is an adherens junction protein. Adherens junctions (AJs; also called the zonula adherens) are critical for the establishment and maintenance of epithelial layers, such as those lining organ surfaces. AJs mediate adhesion between cells, communicate a signal that neighboring cells are present, and anchor the actin cytoskeleton. In serving these roles, AJs regulate normal cell growth and behavior.

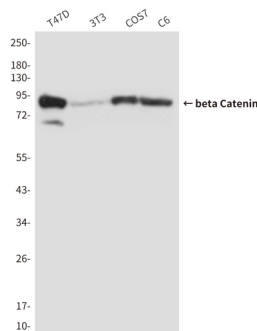
Research Area

Signal Transduction

Image Data

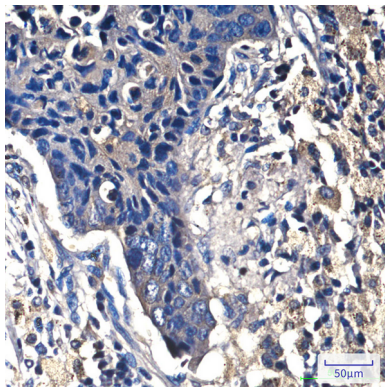


Western blot analysis of beta Catenin (7E2) in Hela, 293T, mouse Liver, rat Liver lysates using β Catenin antibody.



Western blot analysis of beta Catenin (7E2) in T47D, 3T3, COS7 and C6 lysates using β Catenin antibody.

Product Name: beta Catenin (7E2) Mouse Monoclonal Antibody
Catalog #: AMM03594



Immunohistochemistry analysis of paraffin-embedded Human lung cancer tissue using beta Catenin (7E2) antibody. High-pressure and temperature Sodium Citrate pH 6.0 was used for antigen retrieval.

Note

For research use only.