

Product Name: eIF4A1 (6D7) Mouse Monoclonal Antibody
Catalog #: AMM03587

Summary

Production Name	eIF4A1 (6D7) Mouse Monoclonal Antibody
Description	Mouse Monoclonal Antibody
Host	Mouse
Application	WB,IHC-F,IHC-P,ICC/IF
Reactivity	Human,Mouse,Rat

Performance

Conjugation	Unconjugated
Modification	Unmodified
Isotype	IgG1
Clonality	Monoclonal
Form	Liquid
Storage	Store at 4°C short term. Aliquot and store at -20°C long term. Avoid freeze/thaw cycles.
Buffer	Liquid in PBS containing 50% glycerol, 0.5% BSA and 0.02% sodium azide, pH 7.3.
Purification	Affinity Purification

Immunogen

Gene Name	EIF4A1
Alternative Names	Eukaryotic initiation factor 4A-I; eIF-4A-I; eIF4A-I; ATP-dependent RNA helicase eIF4A-1
Gene ID	1973
SwissProt ID	P60842.

Application

Dilution Ratio	WB: 1:500-1:1000 IHC: 1:50-1:100 IF: 1:50-1:200
Molecular Weight	Calculated MW: 46 kDa; Observed MW: 46 kDa

Product Name: eIF4A1 (6D7) Mouse Monoclonal Antibody
Catalog #: AMM03587

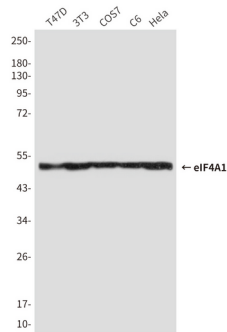
Background

ATP-dependent RNA helicase which is a subunit of the eIF4F complex involved in cap recognition and is required for mRNA binding to ribosome.

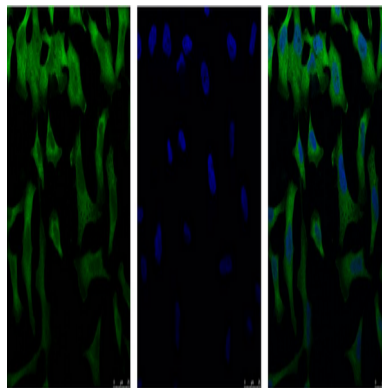
Research Area

Epigenetics and Nuclear Signaling

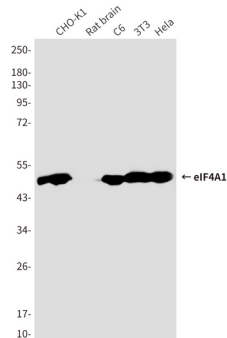
Image Data



Western blot analysis of eIF4A1 in T47D, 3T3, COS7, C6 and HeLa lysates using eIF4A1 antibody.



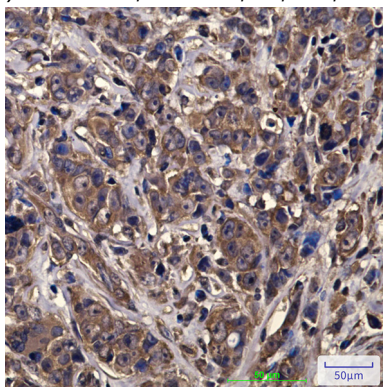
Immunofluorescence analysis of eIF4A1 (6D7) in HeLa using eIF4A1 (6D7) antibody(Left), and DAPI (blue)



Product Name: eIF4A1 (6D7) Mouse Monoclonal Antibody
Catalog #: AMM03587



Western blot analysis of eIF4A1 (6D7) in CHO-K1, rat brain, C6, 3T3, Hela lysates using eIF4A (6D7) antibody.



Immunohistochemistry analysis of paraffin-embedded Human breast cancer tissue using eIF4A1 (6D7) antibody. High-pressure and temperature Sodium Citrate pH 6.0 was used for antigen retrieval.

Note

For research use only.