

**Product Name: Cytokeratin 16 (10C7) Mouse  
Monoclonal Antibody  
Catalog #: AMM03578**

---

## Summary

<b>Production Name</b>	Cytokeratin 16 (10C7) Mouse Monoclonal Antibody
<b>Description</b>	Mouse Monoclonal Antibody
<b>Host</b>	Mouse
<b>Application</b>	WB,IHC-P
<b>Reactivity</b>	Human,Mouse,Rat

## Performance

<b>Conjugation</b>	Unconjugated
<b>Modification</b>	Unmodified
<b>Isotype</b>	IgG1
<b>Clonality</b>	Monoclonal
<b>Form</b>	Liquid
<b>Storage</b>	Store at 4°C short term. Aliquot and store at -20°C long term. Avoid freeze/thaw cycles.
<b>Buffer</b>	Liquid in PBS containing 50% glycerol, 0.5% BSA and 0.02% sodium azide, pH 7.3.
<b>Purification</b>	Affinity Purification

## Immunogen

<b>Gene Name</b>	KRT16
<b>Alternative Names</b>	KRT16; KRT16A; Keratin; type I cytoskeletal 16; Cytokeratin-16; CK-16; Keratin-16; K16
<b>Gene ID</b>	3868
<b>SwissProt ID</b>	P08779.

## Application

<b>Dilution Ratio</b>	WB: 1:500-1:1000 IHC: 1:50-1:100
<b>Molecular Weight</b>	Calculated MW: 51 kDa; Observed MW: 51 kDa

## Background

---

**Product Name: Cytokeratin 16 (10C7) Mouse  
Monoclonal Antibody  
Catalog #: AMM03578**

---

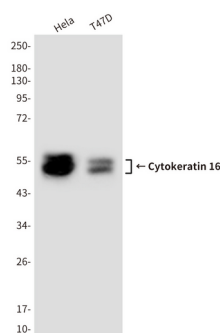


K16 is a type I cytoskeletal keratin. The keratins are intermediate filament proteins responsible for the structural integrity of epithelial cells and are subdivided into cytokeratins and hair keratins. There are two types of cytoskeletal and microfibrillar keratin: type I (acidic; 40-55 kDa) [K9 to K20] and type II (neutral to basic; 56-70 kDa) [K1 to K8].

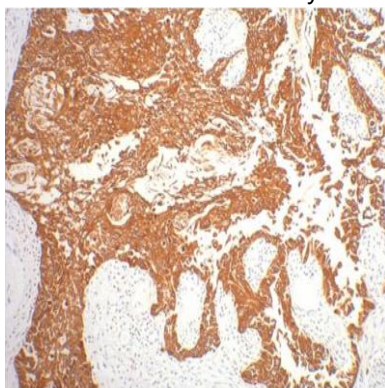
## Research Area

Signal Transduction

## Image Data



Western blot analysis of Cytokeratin 16 in T47D and HeLa lysates using Cytokeratin 16 antibody.



Immunohistochemistry analysis of paraffin-embedded Human gullet cancer tissue using CK16 antibody. High-pressure and temperature Sodium Citrate pH 6.0 was used for antigen retrieval.

## Note

For research use only.