

Product Name: Cytokeratin 18 (6A8) Mouse Monoclonal Antibody
Catalog #: AMM03570

Summary

Production Name	Cytokeratin 18 (6A8) Mouse Monoclonal Antibody
Description	Mouse Monoclonal Antibody
Host	Mouse
Application	WB,IHC-P
Reactivity	Human

Performance

Conjugation	Unconjugated
Modification	Unmodified
Isotype	IgG2b
Clonality	Monoclonal
Form	Liquid
Storage	Store at 4°C short term. Aliquot and store at -20°C long term. Avoid freeze/thaw cycles.
Buffer	Liquid in PBS containing 50% glycerol, 0.5% BSA and 0.02% sodium azide, pH 7.3.
Purification	Ascitic Fluid

Immunogen

Gene Name	KRT18 Cell proliferation inducing gene 46 protein; Cell proliferation inducing protein 46; Cell proliferation-inducing gene 46 protein; CK 18; CK-18; CK18; CYK 18; CYK18; Cytokeratin 18; Cytokeratin endo B; Cytokeratin-18; K 18; K18; K1C18_HUMAN; Keratin 18; Keratin D; keratin; type I cytoskeletal 18; Keratin-18; KRT18.
Alternative Names	
Gene ID	3875
SwissProt ID	P05783.

Application

Dilution Ratio	WB: 1:500-1:1000 IHC: 1:50-1:100
Molecular Weight	Calculated MW: 48 kDa; Observed MW: 48 kDa

Product Name: Cytokeratin 18 (6A8) Mouse Monoclonal Antibody
Catalog #: AMM03570

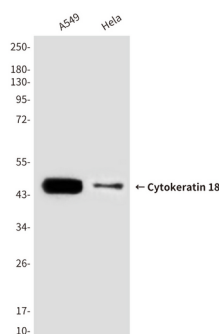
Background

K18 a type I cytoskeletal keratin. The keratins are intermediate filament proteins responsible for the structural integrity of epithelial cells and are subdivided into cytokeratins and hair keratins. Keratin 18 and its filament partner keratin 8 are perhaps the most commonly found members of the intermediate filament gene family.

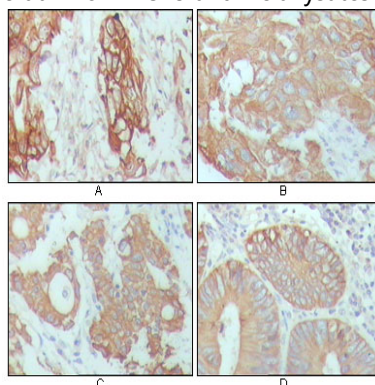
Research Area

Tags & Cell Markers

Image Data



Western blot analysis of Cytokeratin 18 in A549 and HeLa lysates using Cytokeratin 18 antibody.



Immunohistochemistry analysis of paraffin-embedded Human breast carcinoma, hepatocarcinoma, stomach cancer and colon cancer tissue using CK18 antibody. High-pressure and temperature Sodium Citrate pH 6.0 was used for antigen retrieval.

Note



**Product Name: Cytokeratin 18 (6A8) Mouse Monoclonal
Antibody
Catalog #: AMM03570**

For research use only.