

Product Name: LPP (6F6) Mouse Monoclonal Antibody
Catalog #: AMM03568



Summary

Production Name	LPP (6F6) Mouse Monoclonal Antibody
Description	Mouse Monoclonal Antibody
Host	Mouse
Application	WB,IHC-F,IHC-P,ICC/IF,IP
Reactivity	Human,Mouse,Rat,Monkey,Hamster

Performance

Conjugation	Unconjugated
Modification	Unmodified
Isotype	IgG1
Clonality	Monoclonal
Form	Liquid
Storage	Store at 4°C short term. Aliquot and store at -20°C long term. Avoid freeze/thaw cycles.
Buffer	Ascitic fluid containing 0.03% sodium azide.
Purification	Ascitic Fluid

Immunogen

Gene Name	LPP
Alternative Names	LPP; Lipoma-preferred partner; LIM domain-containing preferred translocation partner in lipoma
Gene ID	4026
SwissProt ID	Q93052.

Application

Dilution Ratio	WB: 1:500-1:1000 IHC: 1:50-1:100 IF: 1:50-1:200 IP: 1:20
Molecular Weight	Calculated MW: 66 kDa; Observed MW: 66 kDa

Background

Product Name: LPP (6F6) Mouse Monoclonal Antibody
Catalog #: AMM03568

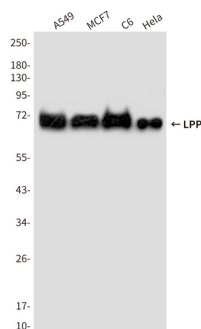


May play a structural role at sites of cell adhesion in maintaining cell shape and motility. In addition to these structural functions, it may also be implicated in signaling events and activation of gene transcription.

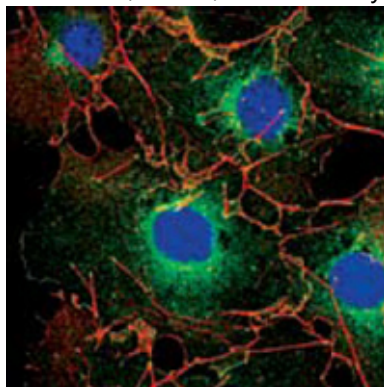
Research Area

Signal Transduction

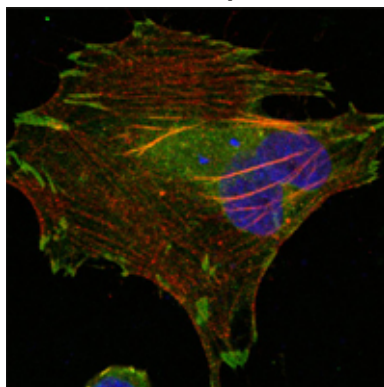
Image Data



Western blot analysis of LPP in A549, MCF-7, C6 and HeLa lysates using LPP antibody.



Immunofluorescence analysis of LPP (6F6) in COS using LPP antibody(green). Red: Actin filaments have been labeled using DY554 phalloidin. Blue: DRAQ5 fluorescent DNA dye.

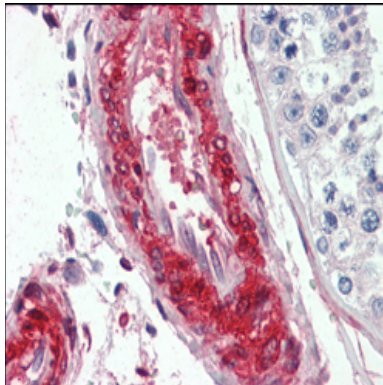


Immunofluorescence analysis of LPP (6F6) in HeLa cells using LPP antibody(green). Red: Actin filaments have been labeled

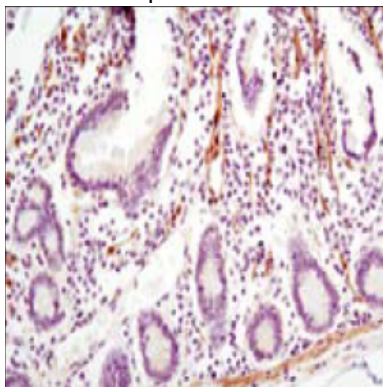
Product Name: LPP (6F6) Mouse Monoclonal Antibody
Catalog #: AMM03568



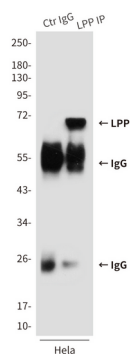
using DY554 phalloidin, and DAPI (blue). DRAQ5 fluorescent DNA dye.



Immunohistochemistry analysis of paraffin-embedded Human vessels tissues using LPP antibody. High-pressure and temperature Sodium Citrate pH 6.0 was used for antigen retrieval.



Immunohistochemistry analysis of paraffin-embedded Human small intestine using LPP (6F6) antibody. High-pressure and temperature Sodium Citrate pH 6.0 was used for antigen retrieval.



Immunoprecipitation analysis of LPP in HeLa lysates using LPP (6F6) antibody.

Note

For research use only.