

Product Name: KDM1A (1B2) Mouse Monoclonal Antibody
Catalog #: AMM03566

Summary

Production Name	KDM1A (1B2) Mouse Monoclonal Antibody
Description	Mouse Monoclonal Antibody
Host	Mouse
Application	WB
Reactivity	Human,Mouse,Monkey

Performance

Conjugation	Unconjugated
Modification	Unmodified
Isotype	IgG1
Clonality	Monoclonal
Form	Liquid
Storage	Store at 4°C short term. Aliquot and store at -20°C long term. Avoid freeze/thaw cycles.
Buffer	Liquid in PBS containing 50% glycerol, 0.5% BSA and 0.02% sodium azide, pH 7.3.
Purification	Ascitic Fluid

Immunogen

Gene Name	KDM1A KDM1A; AOF2; KDM1; KIAA0601; LSD1; Lysine-specific histone demethylase 1A;
Alternative Names	BRAF35-HDAC complex protein BHC110; Flavin-containing amine oxidase domain-containing protein 2
Gene ID	23028
SwissProt ID	O60341.

Application

Dilution Ratio	WB: 1:500-1:1000
Molecular Weight	Calculated MW: 93 kDa; Observed MW: 93 kDa

Product Name: KDM1A (1B2) Mouse Monoclonal Antibody
Catalog #: AMM03566

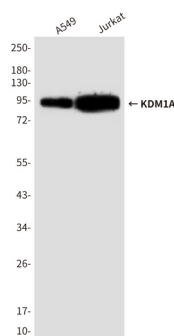
Background

Histone demethylase that demethylates both 'Lys-4' (H3K4me) and 'Lys-9' (H3K9me) of histone H3, thereby acting as a coactivator or a corepressor, depending on the context. Acts by oxidizing the substrate by FAD to generate the corresponding imine that is subsequently hydrolyzed. Acts as a corepressor by mediating demethylation of H3K4me, a specific tag for epigenetic transcriptional activation. Demethylates both mono- (H3K4me1) and di-methylated (H3K4me2) H3K4me. May play a role in the repression of neuronal genes.

Research Area

Epigenetics and Nuclear Signaling

Image Data



Western blot analysis of KDM1 / LSD1 in A549 and Jurkat lysates using KDM1 / LSD1 antibody.

Note

For research use only.