

**Product Name: MLH1 (4C1) Mouse Monoclonal Antibody**  
**Catalog #: AMM03564**

---

## Summary

<b>Production Name</b>	MLH1 (4C1) Mouse Monoclonal Antibody
<b>Description</b>	Mouse Monoclonal Antibody
<b>Host</b>	Mouse
<b>Application</b>	WB, ICC/IF
<b>Reactivity</b>	Human, Monkey

## Performance

<b>Conjugation</b>	Unconjugated
<b>Modification</b>	Unmodified
<b>Isotype</b>	IgG1
<b>Clonality</b>	Monoclonal
<b>Form</b>	Liquid
<b>Storage</b>	Store at 4°C short term. Aliquot and store at -20°C long term. Avoid freeze/thaw cycles.
<b>Buffer</b>	Ascitic fluid containing 0.03% sodium azide.
<b>Purification</b>	Ascitic Fluid

## Immunogen

<b>Gene Name</b>	MLH1
<b>Alternative Names</b>	MLH1; COCA2; DNA mismatch repair protein Mlh1; MutL protein homolog 1
<b>Gene ID</b>	4292
<b>SwissProt ID</b>	P40692.

## Application

<b>Dilution Ratio</b>	WB: 1:500-1:1000 IF: 1:50-1:200
<b>Molecular Weight</b>	Calculated MW: 85 kDa; Observed MW: 85 kDa

## Background

---

**Product Name: MLH1 (4C1) Mouse Monoclonal Antibody**  
**Catalog #: AMM03564**

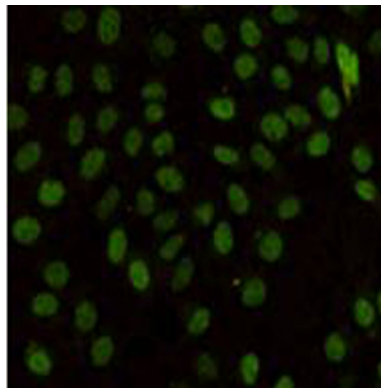
---

This gene was identified as a locus frequently mutated in hereditary nonpolyposis colon cancer (HNPCC). It is a human homolog of the E. coli DNA mismatch repair gene mutL, consistent with the characteristic alterations in microsatellite sequences (RER+ phenotype) found in HNPCC. Alternatively spliced transcript variants encoding different isoforms have been described, but their full-length natures have not been determined.

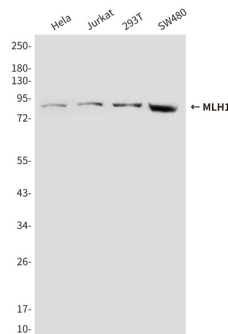
## Research Area

Epigenetics and Nuclear Signaling

## Image Data



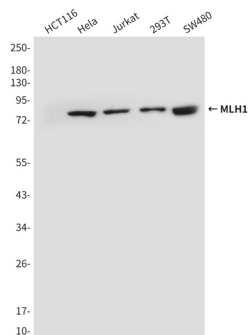
Immunocytochemistry analysis of MLH1 (4C1) in HeLa cells using MLH1 antibody.



Western blot analysis of MLH1 (4C1) in HeLa, Jurkat, 293T and SW480 lysates using MLH1 (4C1) antibody

**Product Name: MLH1 (4C1) Mouse Monoclonal Antibody**  
**Catalog #: AMM03564**

---



Western blot analysis of MLH1 (4C1) in SW48, 293T, Jurkat and Hela lysates using MLH1 (4C1) antibody

### **Note**

For research use only.