

**Product Name: CD31 (2D3) Mouse Monoclonal Antibody**  
**Catalog #: AMM03503**

---

## Summary

|                        |                                      |
|------------------------|--------------------------------------|
| <b>Production Name</b> | CD31 (2D3) Mouse Monoclonal Antibody |
| <b>Description</b>     | Mouse Monoclonal Antibody            |
| <b>Host</b>            | Mouse                                |
| <b>Application</b>     | WB,IP                                |
| <b>Reactivity</b>      | Human                                |

## Performance

|                     |  |
|---------------------|--|
| <b>Conjugation</b>  | Unconjugated   |
| <b>Modification</b> | Unmodified   |
| <b>Isotype</b>      | IgG1   |
| <b>Clonality</b>    | Monoclonal   |
| <b>Form</b>         | Liquid   |
| <b>Storage</b>      | Store at 4°C short term. Aliquot and store at -20°C long term. Avoid freeze/thaw cycles. |
| <b>Buffer</b>       | Liquid in PBS containing 50% glycerol, 0.5% BSA and 0.02% sodium azide, pH 7.3.          |
| <b>Purification</b> | Affinity Purification  |

## Immunogen

|                          |  |
|--------------------------|--|
| <b>Gene Name</b>         | PECAM1   |
| <b>Alternative Names</b> | Platelet endothelial cell adhesion molecule; PECAM-1; EndoCAM; GPIIA <sup>+</sup> ; PECA1; CD antigen CD31 |
| <b>Gene ID</b>           | 5175   |
| <b>SwissProt ID</b>      | P16284.  |

## Application

|                         |   |
|-------------------------|---|
| <b>Dilution Ratio</b>   | WB: 1:500-1:1000 IP: 1:20                   |
| <b>Molecular Weight</b> | Calculated MW: 83 kDa; Observed MW: 130 kDa |

## Background

---

**Product Name: CD31 (2D3) Mouse Monoclonal Antibody**  
**Catalog #: AMM03503**

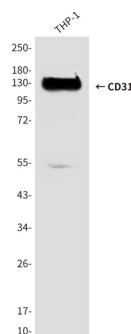


PECAM-1 a cell adhesion molecule expressed on platelets and at endothelial cell intercellular junctions. Plays a role in modulation of integrin-mediated cell adhesion, transendothelial migration, angiogenesis, apoptosis, cell migration, negative regulation of immune cell signaling, autoimmunity, macrophage phagocytosis, IgE-mediated anaphylaxis and thrombosis. Undergoes alternative splicing, generating multiple isoforms in vascular beds of various tissues.

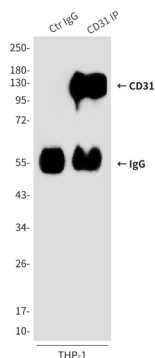
## Research Area

Cardiovascular

## Image Data



Western blot analysis of CD31 in THP-1 lysates using CD31 antibody.



Immunoprecipitation analysis of CD31 (2D3) in THP-1 lysates using CD31 antibody.

## Note

For research use only.