

Product Name: PGP9.5 (7B8) Mouse Monoclonal Antibody
Catalog #: AMM03486

Summary

Production Name	PGP9.5 (7B8) Mouse Monoclonal Antibody
Description	Mouse Monoclonal Antibody
Host	Mouse
Application	WB, ICC/IF
Reactivity	Human, Monkey

Performance

Conjugation	Unconjugated
Modification	Unmodified
Isotype	IgG2b
Clonality	Monoclonal
Form	Liquid
Storage	Store at 4°C short term. Aliquot and store at -20°C long term. Avoid freeze/thaw cycles.
Buffer	Liquid in PBS containing 50% glycerol, 0.5% BSA and 0.02% sodium azide, pH 7.3.
Purification	Affinity Purification

Immunogen

Gene Name	UCHL1 UCHL1 / PGP9.5; UCHL1; B220; CD 45; CD45; cd45 antigen; ec3.1.3.48; GP 180; GP180; Human homolog of severe combined immunodeficiency due to PTPRC deficiency; L CA; L-CA; lca; Leukocyte common antigen; LY 5; LY5; Protein tyrosine phosphatase receptor type C; Protein tyrosine phosphatase receptor type c polypeptide; PTPRC; PTPRC_HUMAN; Receptor-type tyrosine-protein phosphatase C; SCID due to PTPRC deficiency; t200; T200 glycoprotein; T200 leukocyte common antigen.
Alternative Names	
Gene ID	7345
SwissProt ID	P09936.

Application

Product Name: PGP9.5 (7B8) Mouse Monoclonal Antibody
Catalog #: AMM03486

Dilution Ratio	WB: 1:500-1:1000 IF: 1:50-1:200
Molecular Weight	Calculated MW: 25 kDa; Observed MW: 25 kDa

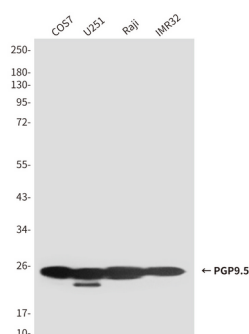
Background

PGP9.5 is a single chain transmembrane glycoprotein which represents the low molecular weight isoform of the Leucocyte Common Antigen (LCA). Hydrolyze isopeptide bonds between the carboxy-terminal glycine of Ub and the ϵ -amino group of lysine on target proteins and involved in the cotranslational processing of pro-ubiquitin and ribosomal proteins translated as ubiquitin fusions.

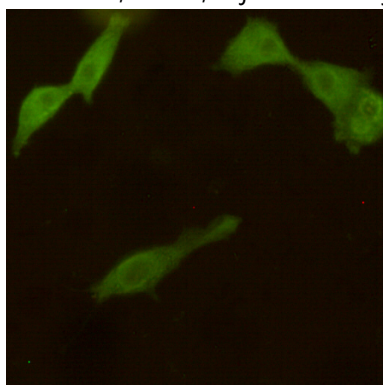
Research Area

Neuroscience

Image Data



Western blot analysis of UCHL1 / PGP9.5 in U251, IMR32, Raji and COS7 lysates using UCHL1 / PGP9.5 antibody.



Immunocytochemistry analysis of PGP9.5 (7B8) in COS7 using UCHL1 / PGP9.5 antibody.

Note

**Product Name: PGP9.5 (7B8) Mouse Monoclonal
Antibody**
Catalog #: AMM03486



For research use only.