

**Product Name: Aurora A (2E3) Mouse Monoclonal Antibody**  
**Catalog #: AMM03449**

---

## Summary

<b>Production Name</b>	Aurora A (2E3) Mouse Monoclonal Antibody
<b>Description</b>	Mouse Monoclonal Antibody
<b>Host</b>	Mouse
<b>Application</b>	WB, ICC/IF
<b>Reactivity</b>	Human, Monkey

## Performance

<b>Conjugation</b>	Unconjugated
<b>Modification</b>	Unmodified
<b>Isotype</b>	IgG1
<b>Clonality</b>	Monoclonal
<b>Form</b>	Liquid
<b>Storage</b>	Store at 4°C short term. Aliquot and store at -20°C long term. Avoid freeze/thaw cycles.
<b>Buffer</b>	Liquid in PBS containing 50% glycerol, 0.5% BSA and 0.02% sodium azide, pH 7.3.
<b>Purification</b>	Affinity Purification

## Immunogen

<b>Gene Name</b>	AURKA
<b>Alternative Names</b>	AIK; ARK1; AYK1; Aurora-A; Aurora-related kinase 1; BTAK; IAK1; Ipl1- and aurora-related kinase 1; STK15; STK6; Serine/threonine kinase 15
<b>Gene ID</b>	6790
<b>SwissProt ID</b>	O14965.

## Application

<b>Dilution Ratio</b>	WB: 1:500-1:1000 IF: 1:50-1:200
<b>Molecular Weight</b>	Calculated MW: 46 kDa; Observed MW: 46 kDa

**Product Name: Aurora A (2E3) Mouse Monoclonal Antibody**  
**Catalog #: AMM03449**



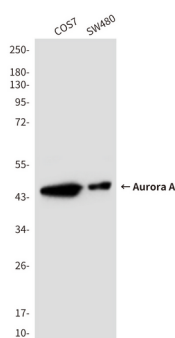
## Background

Mitotic serine/threonine kinases that contributes to the regulation of cell cycle progression. Associates with the centrosome and the spindle microtubules during mitosis and plays a critical role in various mitotic events including the establishment of mitotic spindle, centrosome duplication, centrosome separation as well as maturation, chromosomal alignment, spindle assembly checkpoint, and cytokinesis.

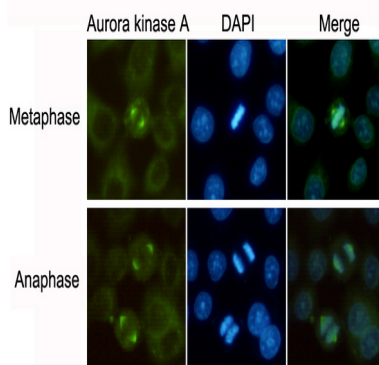
## Research Area

Cell Biology

## Image Data



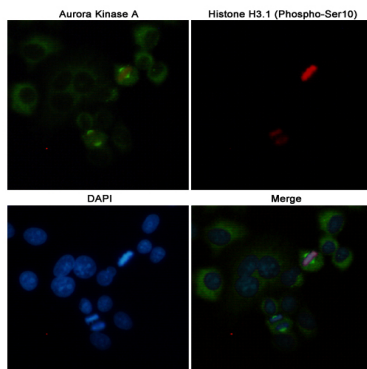
Western blot analysis of Aurora Kinase A in SW480 and COS7 lysates using Aurora Kinase A antibody.



Immunocytochemistry analysis of Aurora A (2E3) in HeLa using Aurora Kinase A antibody.

**Product Name: Aurora A (2E3) Mouse Monoclonal Antibody**  
**Catalog #: AMM03449**

---



Immunofluorescence analysis of Aurora A (2E3) in HeLa cells using Aurora Kinase A antibody(green) and Histone H3.1 (Phospho-Ser1) antibody (red),and DAPI (blue)

### **Note**

For research use only.