

Product Name: TBL1XR1 (4F3) Mouse Monoclonal Antibody
Catalog #: AMM03435

Summary

Production Name	TBL1XR1 (4F3) Mouse Monoclonal Antibody
Description	Mouse Monoclonal Antibody
Host	Mouse
Application	WB,IHC-F,IHC-P,ICC/IF
Reactivity	Human,Mouse

Performance

Conjugation	Unconjugated
Modification	Unmodified
Isotype	IgG1
Clonality	Monoclonal
Form	Liquid
Storage	Store at 4°C short term. Aliquot and store at -20°C long term. Avoid freeze/thaw cycles.
Buffer	Liquid in PBS containing 50% glycerol, 0.5% BSA and 0.02% sodium azide, pH 7.3.
Purification	Affinity Purification

Immunogen

Gene Name	TBL1XR1 C21; DC42; F box like/WD repeat containing protein TBL1XR1; F-box-like/WD repeat-containing protein TBL1XR1; FLJ12894; IRA1; Nuclear receptor corepressor/HDAC3 complex subunit; Nuclear receptor corepressor/HDAC3 complex subunit TBLR1; TBL1 related protein 1; TBL1-related protein 1; TBL1R_HUMAN; TBL1XR1; Transducin (beta) like 1 X linked receptor 1; Transducin beta like 1X related protein 1; Transducin beta-like 1X-related protein 1.
Alternative Names	
Gene ID	79718
SwissProt ID	Q9BZK7.

Application

Product Name: TBL1XR1 (4F3) Mouse Monoclonal Antibody
Catalog #: AMM03435

Dilution Ratio	WB: 1:500-1:1000 IHC: 1:50-1:100 IF: 1:50-1:200
Molecular Weight	Calculated MW: 56 kDa; Observed MW: 60 kDa

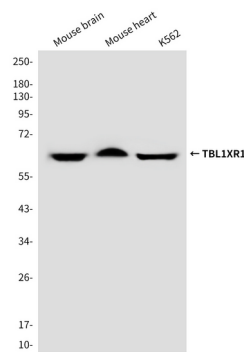
Background

F-box-like protein involved in the recruitment of the ubiquitin/19S proteasome complex to nuclear receptor-regulated transcription units. Plays an essential role in transcription activation mediated by nuclear receptors.

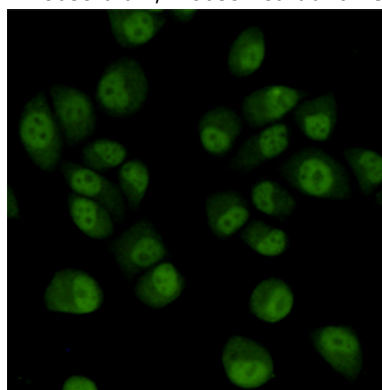
Research Area

Epigenetics and Nuclear Signaling

Image Data

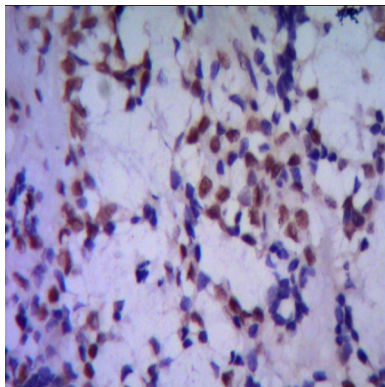


Western blot analysis of TBLR1 in mouse brain, mouse heart and K562 lysates using TBLR1 antibody.

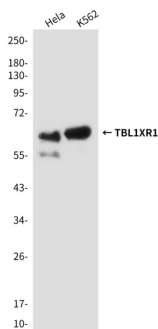


Immunocytochemistry analysis of TBL1XR1 (4F3) in HeLa using TBLR1 antibody.

Product Name: TBL1XR1 (4F3) Mouse Monoclonal Antibody
Catalog #: AMM03435



Immunohistochemistry analysis of paraffin-embedded human breast cancer using TBLR1 antibody. High-pressure and temperature Sodium Citrate pH 6.0 was used for antigen retrieval.



Western blot analysis of TBL1XR1 (4F3) in HeLa, K562 lysates using TBL1XR1 (4F3) antibody

Note

For research use only.