

**Product Name: SMYD1 (2E11) Mouse Monoclonal Antibody**  
**Catalog #: AMM03426**

---

## Summary

<b>Production Name</b>	SMYD1 (2E11) Mouse Monoclonal Antibody
<b>Description</b>	Mouse Monoclonal Antibody
<b>Host</b>	Mouse
<b>Application</b>	WB
<b>Reactivity</b>	Rat

## Performance

<b>Conjugation</b>	Unconjugated
<b>Modification</b>	Unmodified
<b>Isotype</b>	IgG2b
<b>Clonality</b>	Monoclonal
<b>Form</b>	Liquid
<b>Storage</b>	Store at 4°C short term. Aliquot and store at -20°C long term. Avoid freeze/thaw cycles.
<b>Buffer</b>	Liquid in PBS containing 50% glycerol, 0.5% BSA and 0.02% sodium azide, pH 7.3.
<b>Purification</b>	Affinity Purification

## Immunogen

<b>Gene Name</b>	SMYD1
<b>Alternative Names</b>	BOP; KMT3D; ZMYND18; ZMYND22
<b>Gene ID</b>	150572
<b>SwissProt ID</b>	Q8NB12.

## Application

<b>Dilution Ratio</b>	WB: 1:500-1:1000
<b>Molecular Weight</b>	Calculated MW: 57 kDa; Observed MW: 57 kDa

## Background

Acts as a transcriptional repressor. Essential for cardiomyocyte differentiation and cardiac morphogenesis By similarity.

**Product Name: SMYD1 (2E11) Mouse Monoclonal Antibody**  
**Catalog #: AMM03426**

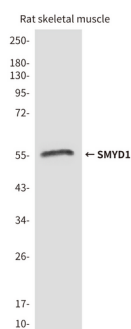
---



## Research Area

Epigenetics and Nuclear Signaling

## Image Data



Western blot analysis of SMYD1 in rat skeletal muscle lysates using SMYD1 antibody.

## Note

For research use only.