

**Product Name: KLF4 (3B3) Mouse Monoclonal Antibody**  
**Catalog #: AMM03421**



## Summary

<b>Production Name</b>	KLF4 (3B3) Mouse Monoclonal Antibody
<b>Description</b>	Mouse Monoclonal Antibody
<b>Host</b>	Mouse
<b>Application</b>	WB
<b>Reactivity</b>	Human,Mouse,Rat

## Performance

<b>Conjugation</b>	Unconjugated
<b>Modification</b>	Unmodified
<b>Isotype</b>	IgG2b
<b>Clonality</b>	Monoclonal
<b>Form</b>	Liquid
<b>Storage</b>	Store at 4°C short term. Aliquot and store at -20°C long term. Avoid freeze/thaw cycles.
<b>Buffer</b>	Liquid in PBS containing 50% glycerol, 0.5% BSA and 0.02% sodium azide, pH 7.3.
<b>Purification</b>	Affinity Purification

## Immunogen

<b>Gene Name</b>	KLF4 Endothelial Kruppel like zinc finger protein; Epithelial zinc finger protein EZF; EZF; GKLF;
<b>Alternative Names</b>	Gut-enriched krueppel-like factor; KLF; KLF4; KLF4_HUMAN; Krueppel-like factor 4; Kruppel like factor 4; Epithelial zinc finger protein EZF; Gut enriched Krueppel like factor; Kruppel like factor 4 (gut).
<b>Gene ID</b>	9314
<b>SwissProt ID</b>	O43474.

## Application

<b>Dilution Ratio</b>	WB: 1:500-1:1000
<b>Molecular Weight</b>	Calculated MW: 55 kDa; Observed MW: 55,65 kDa

**Product Name: KLF4 (3B3) Mouse Monoclonal Antibody**  
**Catalog #: AMM03421**



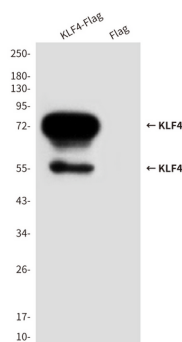
## Background

KLF4 is a member of the erythroid Kruppel-like factor (EKLF) multigene family that is highly expressed in the differentiating layers of the epidermis. KLF4 plays a critical role in the differentiation of epithelial cells and is essential for normal gastric homeostasis and function as both a repressor and activator of transcription.

## Research Area

Epigenetics and Nuclear Signaling

## Image Data



Western blot analysis of KLF4 (3B3) in CHO-K1 lysates, transfected with pcDNA3.1Hygro(+)mKLF4Flag construct (A) or transfected with pDNA3.1Hygro(+)Flag vector (B), using KLF4 antibody.

## Note

For research use only.