

Product Name: Eg5 (4H3) Mouse Monoclonal Antibody
Catalog #: AMM03415



Summary

Production Name	Eg5 (4H3) Mouse Monoclonal Antibody
Description	Mouse Monoclonal Antibody
Host	Mouse
Application	WB, ICC/IF, IP
Reactivity	Human

Performance

Conjugation	Unconjugated
Modification	Unmodified
Isotype	IgG1
Clonality	Monoclonal
Form	Liquid
Storage	Store at 4°C short term. Aliquot and store at -20°C long term. Avoid freeze/thaw cycles.
Buffer	Liquid in PBS containing 50% glycerol, 0.5% BSA and 0.02% sodium azide, pH 7.3.
Purification	Affinity Purification

Immunogen

Gene Name	KIF11
Alternative Names	KIF11; EG5; KNSL1; TRIP5; Kinesin-like protein KIF11; Kinesin-like protein 1; Kinesin-like spindle protein HKSP; Kinesin-related motor protein Eg5; Thyroid receptor-interacting protein 5; TR-interacting protein 5; TRIP-5
Gene ID	3832
SwissProt ID	P52732.

Application

Dilution Ratio	WB: 1:500-1:1000 IF: 1:50-1:200 IP: 1:20
Molecular Weight	Calculated MW: 119 kDa; Observed MW: 130 kDa

Product Name: Eg5 (4H3) Mouse Monoclonal Antibody
Catalog #: AMM03415



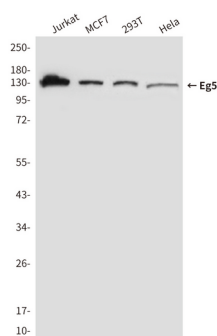
Background

Motor protein required for establishing a bipolar spindle. Blocking of KIF11 prevents centrosome migration and arrest cells in mitosis with monoastal microtubule arrays.

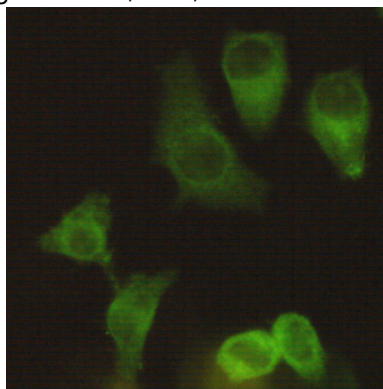
Research Area

Signal Transduction

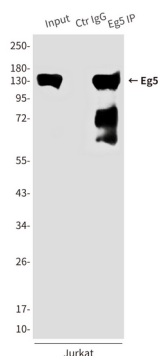
Image Data



Western blot analysis of Eg5 in MCF-7, 293T, Jurkat and Hela lysates using Eg5 antibody.



Immunocytochemistry analysis of Eg5 (4H3) in Hela using Eg5 antibody.



Immunoprecipitation analysis of Eg5 (4H3) in Jurkat lysates using Eg5 antibody.

Product Name: Eg5 (4H3) Mouse Monoclonal Antibody
Catalog #: AMM03415



Note

For research use only.