

**Product Name: C Reactive Protein (1H3) Mouse
Monoclonal Antibody
Catalog #: AMM03329**

Summary

Production Name	C Reactive Protein (1H3) Mouse Monoclonal Antibody
Description	Mouse Monoclonal Antibody
Host	Mouse
Application	ELISA
Reactivity	Human

Performance

Conjugation	Unconjugated
Modification	Unmodified
Isotype	IgG1
Clonality	Monoclonal
Form	Liquid
Storage	Store at 4°C short term. Aliquot and store at -20°C long term. Avoid freeze/thaw cycles.
Buffer	Liquid in PBS containing 50% glycerol, 0.5% BSA and 0.02% sodium azide, pH 7.3.
Purification	Affinity Purification

Immunogen

Gene Name	CRP
Alternative Names	CRP; PTX1; C-reactive protein
Gene ID	1401
SwissProt ID	P02741.

Application

Dilution Ratio	ELISA: 1:10000
Molecular Weight	-

Background

**Product Name: C Reactive Protein (1H3) Mouse
Monoclonal Antibody
Catalog #: AMM03329**

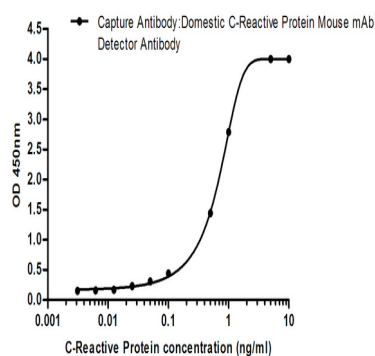


Serum CRP values are routinely measured to detect or monitor many human diseases and minor elevations of C-reactive protein are predictive of cardiovascular events in patients with coronary heart disease. CRP promotes host defense, is an efficient activator of the classical C cascade, and shown to be opsonic. The opsonic and C activation activities are responsible for the nonspecific host defense activities providing protection in the preimmune stage of acute infections.

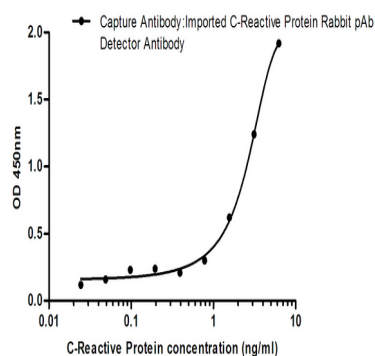
Research Area

Immunology

Image Data



sELISA standard Curve for CReactive Protein: Capture Antibody mouse mAb to CReactive Protein at 1ug/ml and 2012781H3 was used for detecting.



sELISA standard Curve for CReactive Protein: Capture Antibody Rabbit pAb to CReactive Protein at 4ug/ml and 2012781H3 was used for detecting.

Note

For research use only.