

Product Name: CKM (6A12) Mouse Monoclonal Antibody
Catalog #: AMM03324

Summary

Production Name	CKM (6A12) Mouse Monoclonal Antibody
Description	Mouse Monoclonal Antibody
Host	Mouse
Application	ELISA
Reactivity	Human

Performance

Conjugation	Unconjugated
Modification	Unmodified
Isotype	IgG2b
Clonality	Monoclonal
Form	Liquid
Storage	Store at 4°C short term. Aliquot and store at -20°C long term. Avoid freeze/thaw cycles.
Buffer	Liquid in PBS containing 50% glycerol, 0.5% BSA and 0.02% sodium azide, pH 7.3.
Purification	Affinity Purification

Immunogen

Gene Name	CKM
Alternative Names	CKM; CKMM; Creatine kinase M-type; Creatine kinase M chain; M-CK
Gene ID	1158
SwissProt ID	P06732.

Application

Dilution Ratio	ELISA: 1:10000
Molecular Weight	-

Background

The protein encoded by this gene is a cytoplasmic enzyme involved in energy homeostasis and is an important serum

Product Name: CKM (6A12) Mouse Monoclonal Antibody
Catalog #: AMM03324

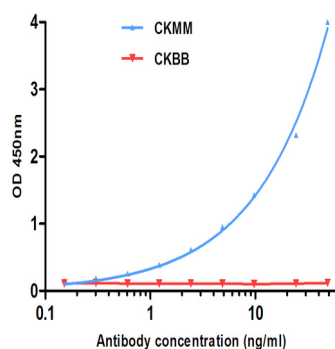


marker for myocardial infarction. The encoded protein reversibly catalyzes the transfer of phosphate between ATP and various phosphogens such as creatine phosphate. It acts as a homodimer in striated muscle as well as in other tissues, and as a heterodimer with a similar brain isozyme in heart. The encoded protein is a member of the ATP:guanido phosphotransferase protein family.

Research Area

Signal Transduction

Image Data



Indirect ELISA assay for antiCKMM mouse mAb. CKBB as control antigen. Antigen coating concentration: 4ug/ml.

Note

For research use only.