

Product Name: Leptin (5C11) Mouse Monoclonal Antibody
Catalog #: AMM03315

Summary

Production Name	Leptin (5C11) Mouse Monoclonal Antibody
Description	Mouse Monoclonal Antibody
Host	Mouse
Application	ELISA
Reactivity	Human

Performance

Conjugation	Unconjugated
Modification	Unmodified
Isotype	IgG2a
Clonality	Monoclonal
Form	Liquid
Storage	Store at 4°C short term. Aliquot and store at -20°C long term. Avoid freeze/thaw cycles.
Buffer	Liquid in PBS containing 50% glycerol, 0.5% BSA and 0.02% sodium azide, pH 7.3.
Purification	Affinity Purification

Immunogen

Gene Name	LEP
Alternative Names	OB; OBS; LEPD; LEP
Gene ID	3952
SwissProt ID	P41159.

Application

Dilution Ratio	ELISA: 1:10000
Molecular Weight	-

Background

This gene encodes a protein that is secreted by white adipocytes, and which plays a major role in the regulation of body

Product Name: Leptin (5C11) Mouse Monoclonal Antibody
Catalog #: AMM03315

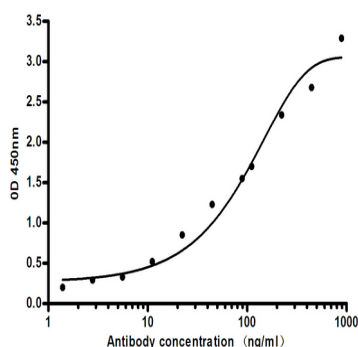


weight. This protein, which acts through the leptin receptor, functions as part of a signaling pathway that can inhibit food intake and/or regulate energy expenditure to maintain constancy of the adipose mass. This protein also has several endocrine functions, and is involved in the regulation of immune and inflammatory responses, hematopoiesis, angiogenesis and wound healing. Mutations in this gene and/or its regulatory regions cause severe obesity, and morbid obesity with hypogonadism. This gene has also been linked to type 2 diabetes mellitus development.

Research Area

Signal Transduction

Image Data



Indirect ELISA assay for antiLeptin mouse mAb. Antigen coating concentration: 4ug/ml.

Note

For research use only.