

**Product Name: Ferritin Light Chain (1A2) Mouse  
Monoclonal Antibody  
Catalog #: AMM03303**

---

## Summary

<b>Production Name</b>	Ferritin Light Chain (1A2) Mouse Monoclonal Antibody
<b>Description</b>	Mouse Monoclonal Antibody
<b>Host</b>	Mouse
<b>Application</b>	ELISA
<b>Reactivity</b>	Human

## Performance

<b>Conjugation</b>	Unconjugated
<b>Modification</b>	Unmodified
<b>Isotype</b>	IgG2b
<b>Clonality</b>	Monoclonal
<b>Form</b>	Liquid
<b>Storage</b>	Store at 4°C short term. Aliquot and store at -20°C long term. Avoid freeze/thaw cycles.
<b>Buffer</b>	Liquid in PBS containing 50% glycerol, 0.5% BSA and 0.02% sodium azide, pH 7.3.
<b>Purification</b>	Affinity Purification

## Immunogen

<b>Gene Name</b>	FTL Ferritin L chain; Ferritin L subunit; Ferritin light chain; Ferritin light polypeptide; Ferritin
<b>Alternative Names</b>	light polypeptide like 3; FRIL; FRIL_HUMAN; FTL; L apoferritin; LFTD; MGC71996; NBIA 3; NBIA3.
<b>Gene ID</b>	2512
<b>SwissProt ID</b>	P02792.

## Application

<b>Dilution Ratio</b>	ELISA: 1:10000
<b>Molecular Weight</b>	-

**Product Name: Ferritin Light Chain (1A2) Mouse  
Monoclonal Antibody  
Catalog #: AMM03303**

---



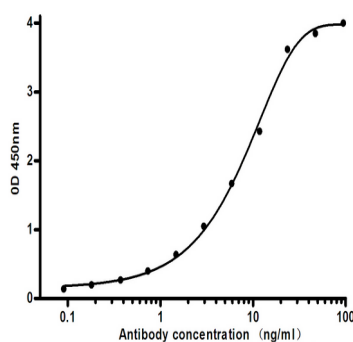
## Background

Stores iron in a soluble, non-toxic, readily available form. Important for iron homeostasis. Iron is taken up in the ferrous form and deposited as ferric hydroxides after oxidation. Also plays a role in delivery of iron to cells. Mediates iron uptake in capsule cells of the developing kidney.

## Research Area

Neuroscience

## Image Data



Indirect ELISA assay for antiFerritin Light Chain mouse mAb. Antigen coating concentration: 4ug/ml.

## Note

For research use only.