

Product Name: Acetyl-Alpha Tubulin (Lys40) (9B8)
Mouse Monoclonal Antibody
Catalog #: AMM00908

Summary

Production Name	Acetyl-Alpha Tubulin (Lys40) (9B8) Mouse Monoclonal Antibody
Description	Mouse Monoclonal Antibody
Host	Mouse
Application	WB,IHC-P
Reactivity	Human,Rat,Mouse

Performance

Conjugation	Unconjugated
Modification	Acetylated
Isotype	IgG1
Clonality	Monoclonal
Form	Liquid
Storage	Store at 4°C short term. Aliquot and store at -20°C long term. Avoid freeze/thaw cycles.
Buffer	Liquid in PBS containing 50% glycerol, 0.5% BSA and 0.02% sodium azide, pH 7.3.
Purification	Affinity Purification

Immunogen

Gene Name	TUBA1B
Alternative Names	alpha tubulin 2; B alpha 1; H2 alpha; Hum a tub 1; TUBA1; TUBA1A; Tubulin alpha 1chain
Gene ID	10376
SwissProt ID	P68363.

Application

Dilution Ratio	WB: 1:500-1:1000 IHC: 1:50-1:100
Molecular Weight	Calculated MW: 50 kDa; Observed MW: 50 kDa

Background

Product Name: Acetyl-Alpha Tubulin (Lys40) (9B8)
Mouse Monoclonal Antibody
Catalog #: AMM00908

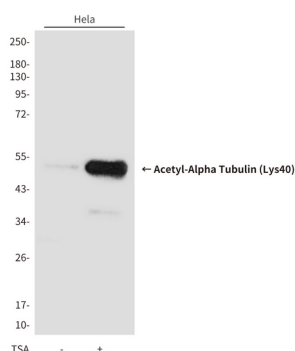


TUBA1A Tubulin is the major constituent of microtubules. It binds two moles of GTP, one at an exchangeable site on the beta chain and one at a non-exchangeable site on the alpha-chain.

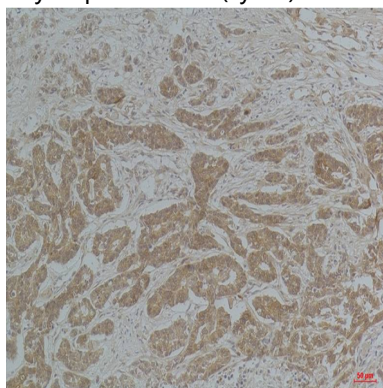
Research Area

Signal Transduction

Image Data

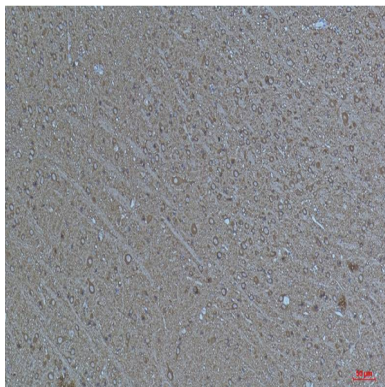


Western blot analysis of Acetyl-Alpha Tubulin (Lys40) (9B8) in HeLa , untreated or treated with TSA (1 μ M, 18 hr; +), using Acetyl-Alpha Tubulin (Lys40) antibody.



Immunohistochemistry analysis of paraffin-embedded Human Breast Carcinoma using α -tubulin(Acetyl Lys40) antibody. High-pressure and temperature Sodium Citrate pH 6.0 was used for antigen retrieval.

Product Name: Acetyl-Alpha Tubulin (Lys40) (9B8)
Mouse Monoclonal Antibody
Catalog #: AMM00908



Immunohistochemistry analysis of paraffin-embedded mouse Brain Tissue using α -tubulin(Acetyl Lys4) antibody. High-pressure and temperature Sodium Citrate pH 6.0 was used for antigen retrieval.

Note

For research use only.