

Product Name: Acetyl-Alpha Tubulin (Lys40) (6B5)
Mouse Monoclonal Antibody
Catalog #: AMM00903

Summary

Production Name	Acetyl-Alpha Tubulin (Lys40) (6B5) Mouse Monoclonal Antibody
Description	Mouse Monoclonal Antibody
Host	Mouse
Application	WB,IHC-P
Reactivity	Human,Rat,Mouse

Performance

Conjugation	Unconjugated
Modification	Acetylated
Isotype	IgG1
Clonality	Monoclonal
Form	Liquid
Storage	Store at 4°C short term. Aliquot and store at -20°C long term. Avoid freeze/thaw cycles.
Buffer	Liquid in PBS containing 50% glycerol, 0.5% BSA and 0.02% sodium azide, pH 7.3.
Purification	Affinity Purification

Immunogen

Gene Name	TUBA1B
Alternative Names	alpha tubulin 2; B alpha 1; H2 alpha; Hum a tub 1; TUBA1; TUBA1A; Tubulin alpha 1chain
Gene ID	10376
SwissProt ID	P68363.

Application

Dilution Ratio	WB: 1:500-1:1000 IHC: 1:50-1:100
Molecular Weight	Calculated MW: 50 kDa; Observed MW: 50 kDa

Background

Product Name: Acetyl-Alpha Tubulin (Lys40) (6B5)
Mouse Monoclonal Antibody
Catalog #: AMM00903

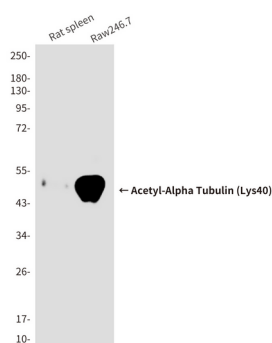


TUBA1A Tubulin is the major constituent of microtubules. It binds two moles of GTP, one at an exchangeable site on the beta chain and one at a non-exchangeable site on the alpha-chain.

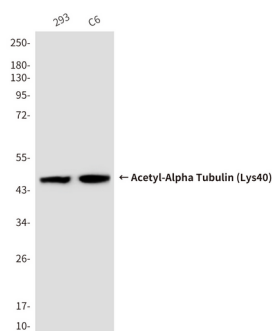
Research Area

Signal Transduction

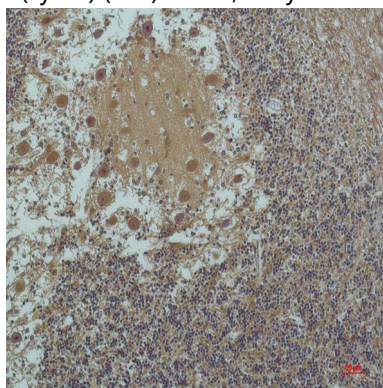
Image Data



Western blot analysis of Acetyl- α -Tubulin (Lys40) in rat spleen, Raw246.7 lysates using Acetyl- α -Tubulin (Lys40) (6B5) antibody.



Western blot analysis of AcetylAlpha Tubulin (Lys40) (6B5) in 293, C6 lysates using Acetyl- α -Tubulin (Lys40) (6B5) antibody.



Product Name: Acetyl-Alpha Tubulin (Lys40) (6B5)
Mouse Monoclonal Antibody
Catalog #: AMM00903



Immunohistochemistry analysis of paraffin-embedded Human Brain Tissue using α -tubulin(Acetyl Lys4) antibody. High-pressure and temperature Sodium Citrate pH 6.0 was used for antigen retrieval.

Note

For research use only.