

Product Name: LC3A (8F5) Mouse Monoclonal Antibody
Catalog #: AMM00891



Summary

Production Name	LC3A (8F5) Mouse Monoclonal Antibody
Description	Mouse Monoclonal Antibody
Host	Mouse
Application	WB,IHC-P
Reactivity	Human,Rat,Mouse

Performance

Conjugation	Unconjugated
Modification	Unmodified
Isotype	IgG1
Clonality	Monoclonal
Form	Liquid
Storage	Store at 4°C short term. Aliquot and store at -20°C long term. Avoid freeze/thaw cycles.
Buffer	Liquid in PBS containing 50% glycerol, 0.5% BSA and 0.02% sodium azide, pH 7.3.
Purification	Affinity Purification

Immunogen

Gene Name	MAP1LC3A Microtubule-associated proteins 1A/1B light chain 3A; Autophagy-related protein LC3 A; Autophagy-related ubiquitin-like modifier LC3 A; MAP1 light chain 3-like protein 1;
Alternative Names	MAP1A/MAP1B light chain 3 A; MAP1A/MAP1B LC3 A; Microtubule-associated protein 1 light chain 3 alpha
Gene ID	84557
SwissProt ID	Q9H492.

Application

Dilution Ratio	WB: 1:500-1:1000 IHC: 1:50-1:100
Molecular Weight	Calculated MW: 14 kDa; Observed MW: 14,16 kDa

Product Name: LC3A (8F5) Mouse Monoclonal Antibody
Catalog #: AMM00891



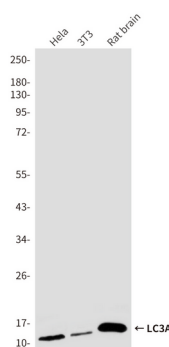
Background

Autophagy marker Light Chain 3 (LC3) was originally identified as a subunit of microtubule-associated proteins 1A and 1B (termed MAP1LC3), and subsequently found to contain similarity to the yeast protein Apg8/Aut7/Cvt5 critical for autophagy. Three human LC3 isoforms (LC3A, LC3B, and LC3C) undergo post-translational modifications during autophagy. Cleavage of LC3 at the carboxy terminus immediately following synthesis yields the cytosolic LC3-I form.

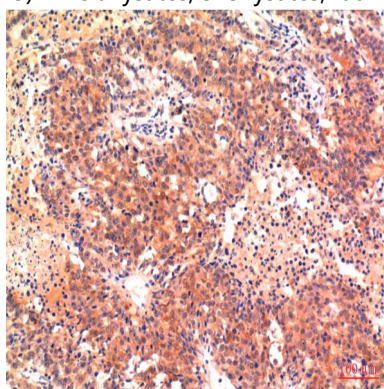
Research Area

Signal Transduction

Image Data

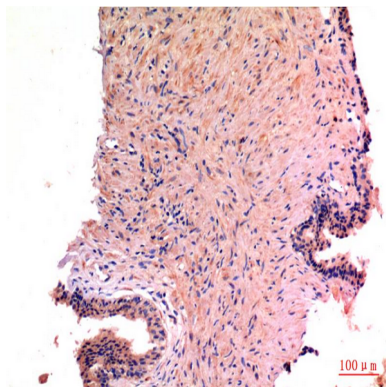


Western blot analysis of LC3A (8F5) in Hela lysates, 3T3 lysates, rat Brain lysates using LC3A antibody.



Immunohistochemistry analysis of paraffin-embedded Human Hepatocarcinoma Tissue using LC3A antibody. High-pressure and temperature Sodium Citrate pH 6.0 was used for antigen retrieval.

Product Name: LC3A (8F5) Mouse Monoclonal Antibody
Catalog #: AMM00891



Immunohistochemistry analysis of paraffin-embedded Human Prostate Carcinoma Tissue using LC3A antibody. High-pressure and temperature Sodium Citrate pH 6.0 was used for antigen retrieval.

Note

For research use only.