

**Product Name: Bovine Serum Albumin (10G8) Mouse
Monoclonal Antibody
Catalog #: AMM00886**



Summary

Production Name	Bovine Serum Albumin (10G8) Mouse Monoclonal Antibody
Description	Mouse Monoclonal Antibody
Host	Mouse
Application	WB
Reactivity	Bovine

Performance

Conjugation	Unconjugated
Modification	Unmodified
Isotype	IgG
Clonality	Monoclonal
Form	Liquid
Storage	Store at 4°C short term. Aliquot and store at -20°C long term. Avoid freeze/thaw cycles.
Buffer	Liquid in PBS containing 50% glycerol, 0.5% BSA and 0.02% sodium azide, pH 7.3.
Purification	Affinity Purification

Immunogen

Gene Name	Alb
Alternative Names	BSA; ALB; Albumin; HSA; PRO0883; Serum Albumin
Gene ID	280717.0
SwissProt ID	P02769.

Application

Dilution Ratio	WB: 1:500-1:1000
Molecular Weight	Calculated MW: 69 kDa; Observed MW: 69 kDa

Background

Serum albumin, the main protein of plasma, has a good binding capacity for water, Ca²⁺, Na⁺, K⁺, fatty acids, hormones,

**Product Name: Bovine Serum Albumin (10G8) Mouse
Monoclonal Antibody
Catalog #: AMM00886**

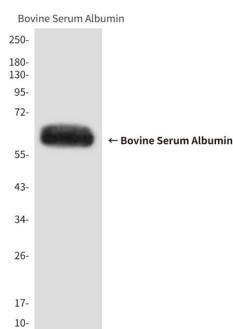


bilirubin and drugs. Its main function is the regulation of the colloidal osmotic pressure of blood. Major zinc transporter in plasma, typically binds about 80% of all plasma zinc.

Research Area

Cardiovascular

Image Data



Western blot analysis of Bovine Serum Albumin (10G8) in Bovine Serum Albuminlysates using Bovine Serum Albumin (10G8) antibody.

Note

For research use only.