

Product Name: beta I Tubulin (1H10) Mouse Monoclonal Antibody
Catalog #: AMM00879

Summary

Production Name	beta I Tubulin (1H10) Mouse Monoclonal Antibody
Description	Mouse Monoclonal Antibody
Host	Mouse
Application	WB,IHC-F,IHC-P,ICC/IF
Reactivity	Human,Rat,Mouse

Performance

Conjugation	Unconjugated
Modification	Unmodified
Isotype	IgG1
Clonality	Monoclonal
Form	Liquid
Storage	Store at 4°C short term. Aliquot and store at -20°C long term. Avoid freeze/thaw cycles.
Buffer	Liquid in PBS containing 50% glycerol, 0.5% BSA and 0.02% sodium azide, pH 7.3.
Purification	Affinity Purification

Immunogen

Gene Name	TUBB1
Alternative Names	beta I tubulin; TBB1; TUBB1; Tubulin beta 1; Class VI beta tubulin
Gene ID	81027
SwissProt ID	Q9H4B7.

Application

Dilution Ratio	WB: 1:500-1:1000 IHC: 1:50-1:100 IF: 1:50-1:200
Molecular Weight	Calculated MW: 50 kDa; Observed MW: 50 kDa

Background

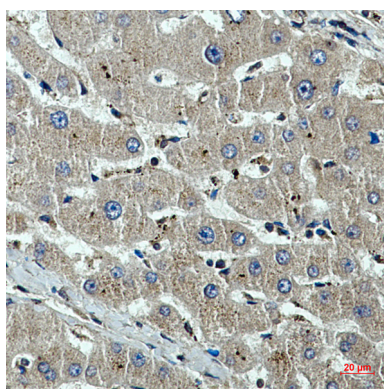
Product Name: beta I Tubulin (1H10) Mouse Monoclonal Antibody
Catalog #: AMM00879

Tubulin is the major constituent of microtubules. It binds two moles of GTP, one at an exchangeable site on the beta chain and one at a non-exchangeable site on the alpha chain (By similarity).

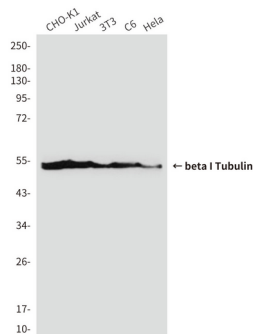
Research Area

Signal Transduction

Image Data

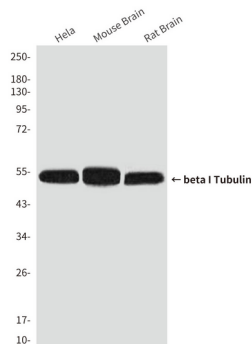


Immunohistochemistry analysis of paraffin-embedded beta I Tubulin in Human liver cancer using beta I Tubulin (1H10) antibody. High-pressure and temperature Sodium Citrate pH 6.0 was used for antigen retrieval.

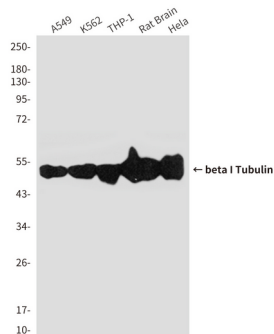


Western blot analysis of beta I Tubulin (1H10) in CHO-K1, Jurkat, 3T3, C6 and HeLa lysates using beta I Tubulin (1H10) antibody

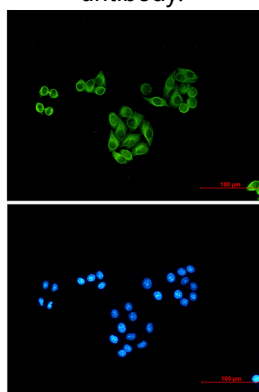
Product Name: beta I Tubulin (1H10) Mouse Monoclonal Antibody
Catalog #: AMM00879



Western blot analysis of beta I Tubulin (1H10) in HeLa, mouse Brain Tissue, rat Brain Tissue lysates using beta I Tubulin (1H10) antibody



Western blot analysis of beta I Tubulin (1H10) in A549, K562, THP-1, rat Brain, HeLa lysates using beta I Tubulin (1H10) antibody.



Immunocytochemistry analysis of beta I Tubulin (1H10) (green) in HeLa using beta I Tubulin (1H10) antibody, and DAPI (blue)

Note

For research use only.