

**Product Name: Rabbit IgG Fc (6D3) Mouse Monoclonal Antibody**  
**Catalog #: AMM00875**

---



## Summary

<b>Production Name</b>	Rabbit IgG Fc (6D3) Mouse Monoclonal Antibody
<b>Description</b>	Mouse Monoclonal Antibody
<b>Host</b>	Mouse
<b>Application</b>	WB
<b>Reactivity</b>	Rabbit

## Performance

<b>Conjugation</b>	Unconjugated
<b>Modification</b>	Unmodified
<b>Isotype</b>	IgG1
<b>Clonality</b>	Monoclonal
<b>Form</b>	Liquid
<b>Storage</b>	Store at 4°C short term. Aliquot and store at -20°C long term. Avoid freeze/thaw cycles.
<b>Buffer</b>	Liquid in PBS containing 50% glycerol, 0.5% BSA and 0.02% sodium azide, pH 7.3.
<b>Purification</b>	Affinity Purification

## Immunogen

<b>Gene Name</b>	Rabbit IgG
<b>Alternative Names</b>	Antibody; Ig gamma chain C region; Ig kappa-b4 chain C region; Ig kappa-b5 chain C region; Ig kappa-b9 chain C region; Ig lambda chain C region; K-BAS.
<b>Gene ID</b>	-
<b>SwissProt ID</b>	-.

## Application

<b>Dilution Ratio</b>	WB: 1:500-1:1000
<b>Molecular Weight</b>	Calculated MW: 55 kDa; Observed MW: 55 kDa

## Background

---

**Product Name: Rabbit IgG Fc (6D3) Mouse Monoclonal Antibody**  
**Catalog #: AMM00875**

---

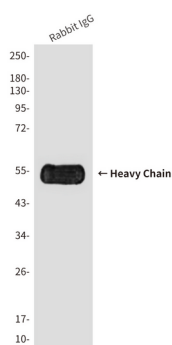


Constant region of immunoglobulin heavy chains. Immunoglobulins, also known as antibodies, are membrane-bound or secreted glycoproteins produced by B lymphocytes.

## Research Area

Immunology

## Image Data



Western blot analysis of Reduced Rabbit IgG, H+L using Rabbit IgG Fc (6D3) antibody.

## Note

For research use only.