

**Product Name: Rabbit IgG H&L (10D2) Mouse
Monoclonal Antibody
Catalog #: AMM00874**

Summary

| | |
|------------------------|---|
| Production Name | Rabbit IgG H&L (10D2) Mouse Monoclonal Antibody |
| Description | Mouse Monoclonal Antibody |
| Host | Mouse |
| Application | WB |
| Reactivity | Rabbit |

Performance

| | |
|---------------------|--|
| Conjugation | Unconjugated |
| Modification | Unmodified |
| Isotype | IgG1 |
| Clonality | Monoclonal |
| Form | Liquid |
| Storage | Store at 4°C short term. Aliquot and store at -20°C long term. Avoid freeze/thaw cycles. |
| Buffer | Liquid in PBS containing 50% glycerol, 0.5% BSA and 0.02% sodium azide, pH 7.3. |
| Purification | Affinity Purification |

Immunogen

| | |
|--------------------------|---|
| Gene Name | Rabbit IgG |
| Alternative Names | Antibody; Ig gamma chain C region; Ig kappa-b4 chain C region; Ig kappa-b5 chain C region; Ig kappa-b9 chain C region; Ig lambda chain C region; K-BAS. |
| Gene ID | - |
| SwissProt ID | -. |

Application

| | |
|-------------------------|--|
| Dilution Ratio | WB: 1:500-1:1000 |
| Molecular Weight | Calculated MW: 25,55 kDa; Observed MW: 25,55 kDa |

Background

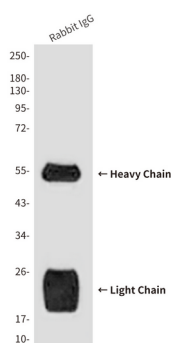
**Product Name: Rabbit IgG H&L (10D2) Mouse
Monoclonal Antibody
Catalog #: AMM00874**

Constant region of immunoglobulin heavy chains. Immunoglobulins, also known as antibodies, are membrane-bound or secreted glycoproteins produced by B lymphocytes.

Research Area

Immunology

Image Data



Western blot analysis of Reduced Rabbit IgG, H+L using Rabbit IgG H&L (10D2) antibody.

Note

For research use only.