

**Product Name: Prostate Specific Antigen Mouse  
Monoclonal Antibody**  
**Catalog #: AMM00863**

---

## Summary

<b>Production Name</b>	Prostate Specific Antigen Mouse Monoclonal Antibody
<b>Description</b>	Mouse Monoclonal Antibody
<b>Host</b>	Mouse
<b>Application</b>	WB,FC
<b>Reactivity</b>	Human

## Performance

<b>Conjugation</b>	Unconjugated
<b>Modification</b>	Unmodified
<b>Isotype</b>	IgG1
<b>Clonality</b>	Monoclonal
<b>Form</b>	Liquid
<b>Storage</b>	Store at 4°C short term. Aliquot and store at -20°C long term. Avoid freeze/thaw cycles.
<b>Buffer</b>	Liquid in PBS containing 50% glycerol, 0.5% BSA and 0.02% sodium azide, pH 7.3.
<b>Purification</b>	Ascitic Fluid

## Immunogen

<b>Gene Name</b>	KLK3
<b>Alternative Names</b>	KLK3; APS; Prostate-specific antigen; PSA; Gamma-seminoprotein; Semin; Kallikrein-3; P-30 antigen; Semenogelase
<b>Gene ID</b>	354
<b>SwissProt ID</b>	P07288.

## Application

<b>Dilution Ratio</b>	WB: 1:500-1:1000 FC: 1:50-1:100
<b>Molecular Weight</b>	Calculated MW: 29 kDa; Observed MW: 37 kDa

**Product Name: Prostate Specific Antigen Mouse  
Monoclonal Antibody  
Catalog #: AMM00863**

---

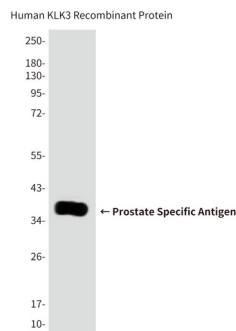
## Background

PSA/KLK3 is a member of the glandular kallikrein subfamily of serine proteases. Upon cleavage of 7 amino-terminal amino acids, it is activated to liquefy semen in the seminal coagulum. Although PSA/KLK3 is produced in healthy individuals, investigators have found abnormally high levels in the blood of men with advanced prostate cancer.

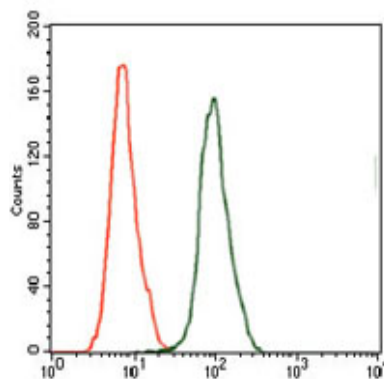
## Research Area

Neuroscience

## Image Data



Western blot analysis of Prostate Specific Antigen in Human KLK3 (AA: 10921) recombinant protein.) using Prostate Specific Antigen antibody.



Flow Cytometry analysis of HeLa cells stained with KLK3 antibody (green) and negative control (red).

## Note

For research use only.