

**Product Name: Ephrin Receptor B1 (9B4) Mouse  
Monoclonal Antibody  
Catalog #: AMM00858**

---

## Summary

<b>Production Name</b>	Ephrin Receptor B1 (9B4) Mouse Monoclonal Antibody
<b>Description</b>	Mouse Monoclonal Antibody
<b>Host</b>	Mouse
<b>Application</b>	WB,IHC-P
<b>Reactivity</b>	Human

## Performance

<b>Conjugation</b>	Unconjugated
<b>Modification</b>	Unmodified
<b>Isotype</b>	IgG1
<b>Clonality</b>	Monoclonal
<b>Form</b>	Liquid
<b>Storage</b>	Store at 4°C short term. Aliquot and store at -20°C long term. Avoid freeze/thaw cycles.
<b>Buffer</b>	Liquid in PBS containing 50% glycerol, 0.5% BSA and 0.02% sodium azide, pH 7.3.
<b>Purification</b>	Ascitic Fluid

## Immunogen

<b>Gene Name</b>	EPHB1 EPHB1; ELK; EPHT2; HEK6; NET; Ephrin type-B receptor 1; ELK; EPH tyrosine kinase 2;
<b>Alternative Names</b>	EPH-like kinase 6; EK6; hEK6; Neuronally-expressed EPH-related tyrosine kinase; NET; Tyrosine-protein kinase receptor EPH-2
<b>Gene ID</b>	2047
<b>SwissProt ID</b>	P54762.

## Application

<b>Dilution Ratio</b>	WB: 1:500-1:1000 IHC: 1:50-1:100
<b>Molecular Weight</b>	Calculated MW: 110 kDa; Observed MW: 110 kDa

**Product Name: Ephrin Receptor B1 (9B4) Mouse  
Monoclonal Antibody  
Catalog #: AMM00858**

---

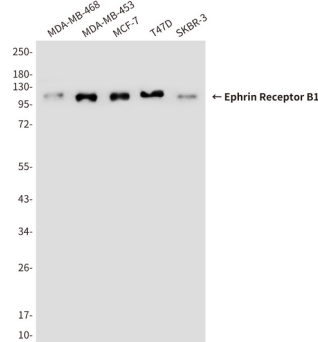
## Background

Receptor for members of the ephrin-B family. Binds to ephrin-B1, -B2 and -B3. Binding with the guidance cue ephrin-B2 at the optic chiasm midline redirect ventrotemporal (VT) retinal ganglion cells (RGCs) axons ipsilaterally. May be involved in cell-cell interactions in the nervous system.

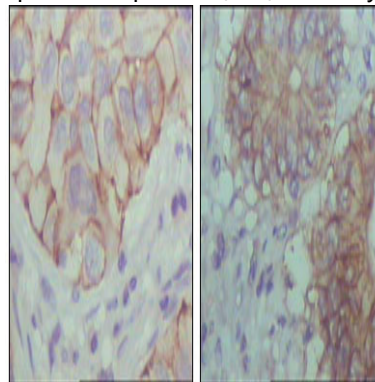
## Research Area

Cardiovascular

## Image Data



Western blot analysis of Ephrin Receptor B1 (9B4) in MDA-MB-468 , MDAMB453 , MCF-7 , T47D and SKBR3 lysates using Ephrin Receptor B1 (9B4) antibody.



Immunohistochemical analysis of paraffin-embedded Human tonsils using Ephrin Receptor B1 (9B4) antibody, with DAB staining. High-pressure and temperature Sodium Citrate pH 6.0 was used for antigen retrieval.

## Note

For research use only.