

**Product Name: epsilon Tubulin (7D3) Mouse  
Monoclonal Antibody  
Catalog #: AMM00756**

---

## Summary

<b>Production Name</b>	epsilon Tubulin (7D3) Mouse Monoclonal Antibody
<b>Description</b>	Mouse Monoclonal Antibody
<b>Host</b>	Mouse
<b>Application</b>	IHC-P
<b>Reactivity</b>	Human,Rat,Mouse

## Performance

<b>Conjugation</b>	Unconjugated
<b>Modification</b>	Unmodified
<b>Isotype</b>	IgG1
<b>Clonality</b>	Monoclonal
<b>Form</b>	Liquid
<b>Storage</b>	Store at 4°C short term. Aliquot and store at -20°C long term. Avoid freeze/thaw cycles.
<b>Buffer</b>	Liquid in PBS containing 50% glycerol, 0.5% BSA and 0.02% sodium azide, pH 7.3.
<b>Purification</b>	Affinity Purification

## Immunogen

<b>Gene Name</b>	TUBE1
<b>Alternative Names</b>	FLJ22589; TUBE1; tubulin epsilon 1; ε tubulin
<b>Gene ID</b>	51175
<b>SwissProt ID</b>	Q9UJT0.

## Application

<b>Dilution Ratio</b>	IHC: 1:50-1:100
<b>Molecular Weight</b>	-

## Background

---

**Product Name: epsilon Tubulin (7D3) Mouse  
Monoclonal Antibody  
Catalog #: AMM00756**

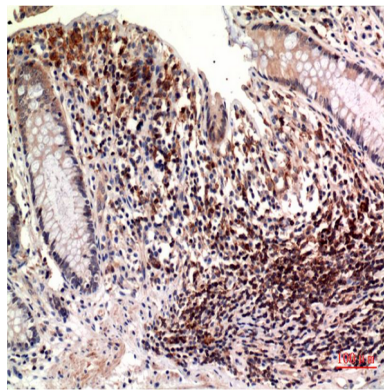
---

This gene encodes a member of the tubulin superfamily. This protein localizes to the centriolar sub-distal appendages that are associated with the older of the two centrioles after centrosome duplication. This protein plays a central role in organization of the microtubules during centriole duplication. A pseudogene of this gene is found on chromosome 5.

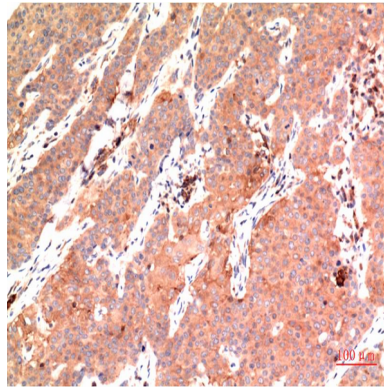
## Research Area

Signal Transduction

## Image Data



Immunohistochemistry analysis of paraffin-embedded Human Colon Carcinoma Tissue using epsilon Tubulin (7D3) antibody. High-pressure and temperature Sodium Citrate pH 6.0 was used for antigen retrieval.



Immunohistochemical analysis of paraffin-embedded Human tonsils using epsilon Tubulin (7D3) antibody. High-pressure and temperature Sodium Citrate pH 6.0 was used for antigen retrieval.

## Note

For research use only.