

**Product Name: KIF7 (2A7) Mouse Monoclonal Antibody**  
**Catalog #: AMM00724**



## Summary

<b>Production Name</b>	KIF7 (2A7) Mouse Monoclonal Antibody
<b>Description</b>	Mouse Monoclonal Antibody
<b>Host</b>	Mouse
<b>Application</b>	IHC-P, ICC/IF
<b>Reactivity</b>	Human, Mouse, Rat

## Performance

<b>Conjugation</b>	Unconjugated
<b>Modification</b>	Unmodified
<b>Isotype</b>	IgG1
<b>Clonality</b>	Monoclonal
<b>Form</b>	Liquid
<b>Storage</b>	Store at 4°C short term. Aliquot and store at -20°C long term. Avoid freeze/thaw cycles.
<b>Buffer</b>	Liquid in PBS containing 50% glycerol, 0.5% BSA and 0.02% sodium azide, pH 7.3.
<b>Purification</b>	Affinity Purification

## Immunogen

<b>Gene Name</b>	KIF7
<b>Alternative Names</b>	kinesin like protein KIF7; EQYK340; kif7
<b>Gene ID</b>	374654
<b>SwissProt ID</b>	Q2M1P5.

## Application

<b>Dilution Ratio</b>	IHC: 1:50-1:100 IF: 1:50-1:200
<b>Molecular Weight</b>	-

## Background

Essential for hedgehog signaling regulation: acts as both a negative and positive regulator of sonic hedgehog (Shh) and

**Product Name: KIF7 (2A7) Mouse Monoclonal Antibody**  
**Catalog #: AMM00724**

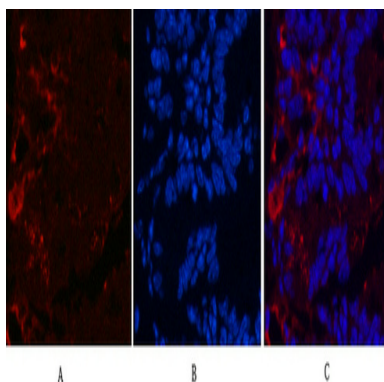


Indian hedgehog (Ihh) pathways, acting downstream of SMO, through both SUFU-dependent and -independent mechanisms (PubMed:21633164). Involved in the regulation of microtubular dynamics. Required for proper organization of the ciliary tip and control of ciliary localization of SUFU-GLI2 complexes . Required for localization of GLI3 to cilia in response to Shh. Negatively regulates Shh signaling by preventing inappropriate activation of the transcriptional activator GLI2 in the absence of ligand. Positively regulates Shh signaling by preventing the processing of the transcription factor GLI3 into its repressor form. In keratinocytes, promotes the dissociation of SUFU-GLI2 complexes, GLI2 nuclear translocation and Shh signaling activation . Involved in the regulation of epidermal differentiation and chondrocyte development .

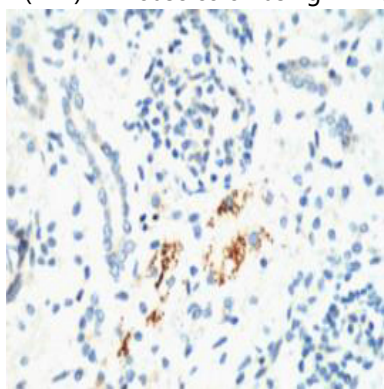
## Research Area

Signal Transduction

## Image Data



Immunofluorescence analysis of KIF7 (2A7) in mouse colon using KIF7 (2A7) antibody(red),and DAPI (blue).



Immunohistochemistry analysis of paraffin-embedded mouse Kidney tissue using KIF7 (2A7) antibody.High-pressure and temperature Sodium Citrate pH 6.0 was used for antigen retrieval.

## Note

For research use only.

**Product Name: KIF7 (2A7) Mouse Monoclonal Antibody**  
**Catalog #: AMM00724**

---

