

**Product Name: CD21 (3B1) Mouse Monoclonal Antibody**  
**Catalog #: AMM00723**

---

## Summary

<b>Production Name</b>	CD21 (3B1) Mouse Monoclonal Antibody
<b>Description</b>	Mouse Monoclonal Antibody
<b>Host</b>	Mouse
<b>Application</b>	IHC-P,ICC/IF
<b>Reactivity</b>	Human,Mouse,Rat

## Performance

<b>Conjugation</b>	Unconjugated
<b>Modification</b>	Unmodified
<b>Isotype</b>	IgG1
<b>Clonality</b>	Monoclonal
<b>Form</b>	Liquid
<b>Storage</b>	Store at 4°C short term. Aliquot and store at -20°C long term. Avoid freeze/thaw cycles.
<b>Buffer</b>	Liquid in PBS containing 50% glycerol, 0.5% BSA and 0.02% sodium azide, pH 7.3.
<b>Purification</b>	Affinity Purification

## Immunogen

<b>Gene Name</b>	CR2
<b>Alternative Names</b>	CR2; C3DR; Complement receptor type 2; Cr2; Complement C3d receptor; Epstein-Barr virus receptor; EBV receptor; CD21
<b>Gene ID</b>	1380
<b>SwissProt ID</b>	P20023.

## Application

<b>Dilution Ratio</b>	IHC: 1:50-1:100 IF: 1:50-1:200
<b>Molecular Weight</b>	-

## Background

---

**Product Name: CD21 (3B1) Mouse Monoclonal Antibody**  
**Catalog #: AMM00723**

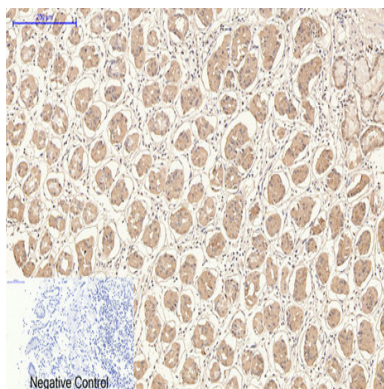


Receptor for complement C3Dd, for the Epstein-Barr virus on human B-cells and T-cells and for HNRPU. Participates in B lymphocytes activation. (Microbial infection) Acts as a receptor for Epstein-Barr virus.

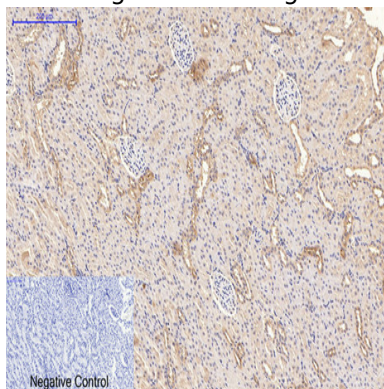
## Research Area

Immunology

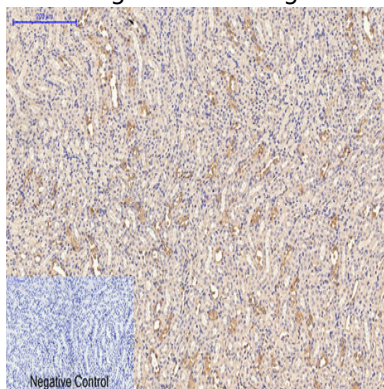
## Image Data



Immunohistochemistry analysis of paraffin-embedded Human stomach tissue using CD21 (3B1) antibody. High-pressure and temperature Sodium Citrate pH 6.0 was used for antigen retrieval. Negative control was used by secondary antibody only.



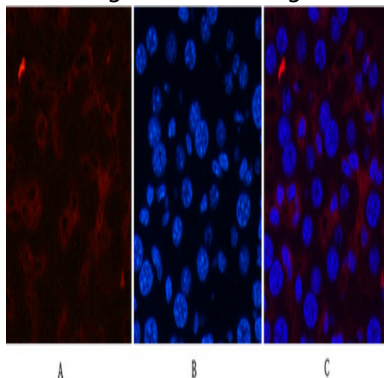
Immunohistochemical analysis of paraffin-embedded Human tonsils using CD21 (3B1) antibody. High-pressure and temperature Sodium Citrate pH 6.0 was used for antigen retrieval. Negative control was used by secondary antibody only.



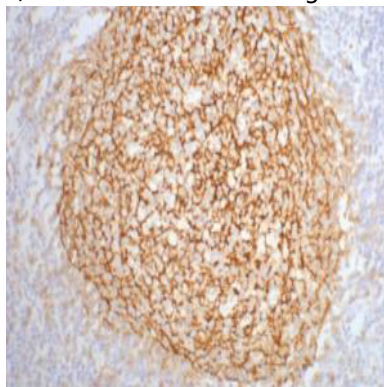
**Product Name: CD21 (3B1) Mouse Monoclonal Antibody**  
**Catalog #: AMM00723**



Immunohistochemistry analysis of paraffin-embedded mouse kidney tissue using CD21 antibody. High-pressure and temperature Sodium Citrate pH 6.0 was used for antigen retrieval. Negative control was used by secondary antibody only.



Immunofluorescence analysis of CD21 (3B1) in mouse liver tissue using CD21 (3B1) antibody(2C5)(red),and DAPI (blue).



Immunohistochemistry analysis of paraffin-embedded Human tonsil tissue using CD21 (3B1) antibody.High-pressure and temperature Sodium Citrate pH 6.0 was used for antigen retrieval.

**Note**

For research use only.