

Product Name: ERK1/2 (1B4) Mouse Monoclonal Antibody
Catalog #: AMM00660

Summary

Production Name	ERK1/2 (1B4) Mouse Monoclonal Antibody
Description	Mouse Monoclonal Antibody
Host	Mouse
Application	WB,IHC-P
Reactivity	Human,Rat,Mouse

Performance

Conjugation	Unconjugated
Modification	Unmodified
Isotype	IgG1
Clonality	Monoclonal
Form	Liquid
Storage	Store at 4°C short term. Aliquot and store at -20°C long term. Avoid freeze/thaw cycles.
Buffer	Liquid in PBS containing 50% glycerol, 0.5% BSA and 0.02% sodium azide, pH 7.3.
Purification	Affinity Purification

Immunogen

Gene Name	MAPK3/MAPK1 MAPK3; ERK1; ERT2; ERK-1; PRKM3; P44ERK1; P44MAPK; HS44KDAP; HUMKER1A; p44-
Alternative Names	ERK1; p44-MAPK; MAPK1; ERK; p38; p40; p41; ERK2; ERT1; ERK-2; MAPK2; PRKM1; PRKM2; P42MAPK; p41mapk; p42-MAPK.
Gene ID	5595/5594
SwissProt ID	P27361/P28482.

Application

Dilution Ratio	WB: 1:500-1:1000 IHC: 1:50-1:100
Molecular Weight	Calculated MW: 44,42 kDa; Observed MW: 44,42 kDa

Product Name: ERK1/2 (1B4) Mouse Monoclonal Antibody
Catalog #: AMM00660

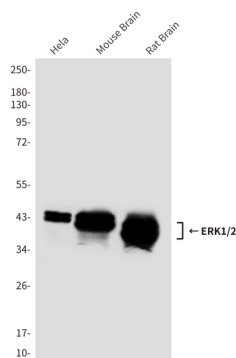
Background

Serine/threonine kinase which acts as an essential component of the MAP kinase signal transduction pathway. MAPK1/ERK2 and MAPK3/ERK1 are the 2 MAPKs which play an important role in the MAPK/ERK cascade. They participate also in a signaling cascade initiated by activated KIT and KITLG/SCF. Depending on the cellular context, the MAPK/ERK cascade mediates diverse biological functions such as cell growth, adhesion, survival and differentiation through the regulation of transcription, translation, cytoskeletal rearrangements.

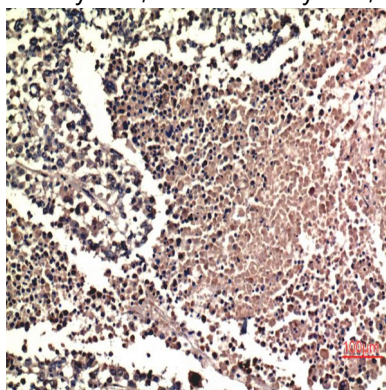
Research Area

Cell Biology

Image Data

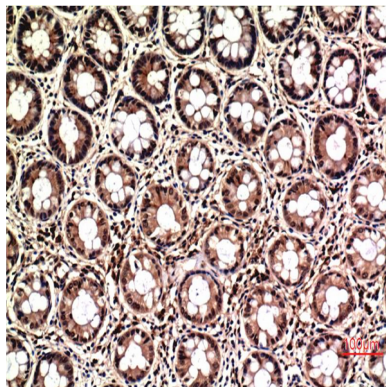


Western blot analysis of ERK1/2 (1B4) in Hela lysates, mouse Brain lysates, rat Brain lysates using ERK1/2 antibody.



Immunohistochemistry analysis of paraffin-embedded Human Lung Carcinoma Tissue using ERK1/2 antibody. High-pressure and temperature Sodium Citrate pH 6.0 was used for antigen retrieval.

Product Name: ERK1/2 (1B4) Mouse Monoclonal Antibody
Catalog #: AMM00660



Immunohistochemistry analysis of paraffin-embedded Human Colon Carcinoma Tissue using ERK1/2 antibody. High-pressure and temperature Sodium Citrate pH 6.0 was used for antigen retrieval.

Note

For research use only.