

**Product Name: His-Tag Polyclonal Antibody****Catalog #: APRab80011**

For research use only.

**Summary**

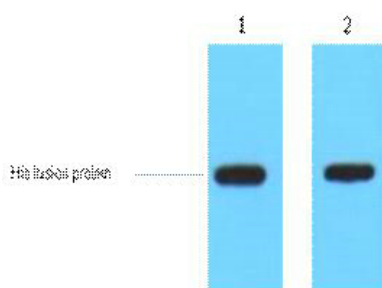
<b>Host</b>	Rabbit
<b>Application</b>	WB, Elisa
<b>Specificity</b>	The antibody detects C-terminal, internal, and N-terminal His-tag fusion proteins.
<b>Reactivity</b>	Species independent
<b>Isotype</b>	IgG
<b>Form</b>	Liquid
<b>Storage</b>	Aliquot and store at -20°C (valid for 12 months). Avoid freeze/thaw cycles.
<b>Shipping</b>	Ice bags
<b>Buffer</b>	Liquid in PBS containing 50% glycerol, 2% BSA and New type preservative N.
<b>Purification</b>	The antibody was affinity-purified from rabbit antiserum by affinity-chromatography using specific immunogen.

**Application**

<b>Dilution Ratio</b>	WB 1:5000, ELISA 1:5000-20000, Optimal dilutions should be determined by the end user
-----------------------	---

**Antigen Information**

<b>Gene Name</b>	His-tag
<b>Immunogen</b>	Synthetic peptide:HHHHHH conjugated to KLH.

**Background****Image Data**

1ug His fusion protein+ Primary antibody dilution at 1) 1:5000,2) 1:20000.  
Secondary antibody was diluted at 1:20000

