

**Production Name:** GST-Tag Polyclonal Antibody  
**Catalog#:** APRab80007



## Summary

<b>Production Name</b>	GST-Tag Polyclonal Antibody
<b>Host</b>	Rabbit
<b>Application</b>	WB, Elisa
<b>specificity</b>	
<b>Reactivity</b>	Species independent
<b>Isotype</b>	IgG1
<b>Storage</b>	Store at 4°C short term. Aliquot and store at -20°C long term. Avoid freeze/thaw cycles.
<b>Buffer</b>	Liquid in PBS containing 50% glycerol, 2% BSA and New type preservative N.
<b>Purification</b>	The antibody was affinity-purified from rabbit antiserum by affinity-chromatography using specific immunogen.

## Immunogen Information

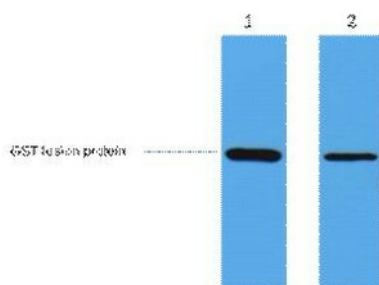
**Gene Name**  
**Immunogen**

## Application

**Dilution Ratio** WB 1:5000, ELISA 1:5000-20000, Optimal dilutions should be determined by the end user

## Background

## Image Data



0.5ug GST fusion protein+ Primary antibody dilution at 1) 1:5000;2) 1:20000. Secondary antibody was diluted at 1:20000

**Production Name:** GST-Tag Polyclonal Antibody  
**Catalog#:** APRab80007

---



**Note**

For research use only .