

Production Name: Tubulin beta-3 (12Z6) Rabbit Monoclonal Antibody
Catalog#: AMRe80022

Summary

Production Name	Tubulin beta-3 (12Z6) Rabbit Monoclonal Antibody
Host	Rabbit
Application	WB, ELISA
specificity	endogenous
Reactivity	Human, Mouse (predicted: Rat)
Isotype	IgG1, Kappa
Storage	Store at 4°C short term. Aliquot and store at -20°C long term. Avoid freeze/thaw cycles.
Buffer	PBS, 50% glycerol, 0.05% Proclin 300, 0.05% BSA
Purification	Protein A

Immunogen Information

Gene Name	
Immunogen	Synthesized peptide derived from human protein. AA range: 400-450

Application

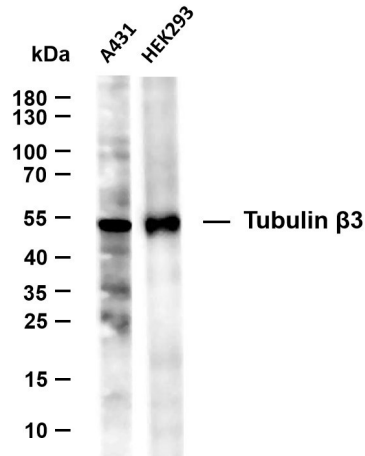
Dilution Ratio	WB 1:500-2000, ELISA 1:20000
-----------------------	------------------------------

Background

tubulin beta 3 class III (TUBB3) Homo sapiens This gene encodes a class III member of the beta tubulin protein family. Beta tubulins are one of two core protein families (alpha and beta tubulins) that heterodimerize and assemble to form microtubules. This protein is primarily expressed in neurons and may be involved in neurogenesis and axon guidance and maintenance. Mutations in this gene are the cause of congenital fibrosis of the extraocular muscles type 3. Alternate splicing results in multiple transcript variants. A pseudogene of this gene is found on chromosome 6

Image Data

Production Name: Tubulin beta-3 (12Z6) Rabbit Monoclonal Antibody
Catalog#: AMRe80022



Various whole cell lysates were separated by 10% SDS-PAGE, and the membrane was blotted with β -actin Rabbit Monoclonal Antibody. The HRP-conjugated Goat anti-Rabbit IgG(H + L) antibody was used to detect the antibody. Lane 1:A431 Lane 2:HEK293 Predicted band size: 50kDa Observed band size: 50kDa

Note

For research use only .