

Production Name: β -actin Rabbit Monoclonal Antibody
Catalog#: AMRe80020



Summary

Production Name	β -actin Rabbit Monoclonal Antibody
Host	Rabbit
Application	WB,ELISA
specificity	endogenous
Reactivity	Human,Mouse,Rat
Isotype	IgG1, Kappa
Storage	Store at 4°C short term. Aliquot and store at -20°C long term. Avoid freeze/thaw cycles.
Buffer	PBS, 50% glycerol, 0.05% Proclin 300, 0.05%BSA
Purification	Protein A

Immunogen Information

Gene Name	ACTB
Immunogen	Synthesized peptide derived from human protein. AA range:1-100

Application

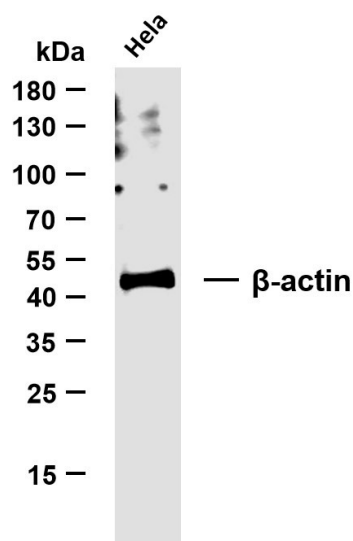
Dilution Ratio	WB 1:500-2000, ELISA 1:20000
-----------------------	------------------------------

Background

This gene encodes one of six different actin proteins. Actins are highly conserved proteins that are involved in cell motility, structure, and integrity. This actin is a major constituent of the contractile apparatus and one of the two nonmuscle cytoskeletal actins

Image Data

Production Name: β -actin Rabbit Monoclonal Antibody
Catalog#: AMRe80020



Whole cell lysates were separated by 10% SDS-PAGE, and the membrane was blotted with β -actin Rabbit Monoclonal Antibody. The HRP-conjugated Goat anti-Rabbit IgG(H + L) antibody was used to detect the antibody. Lane 1: HeLa Predicted band size: 42kDa Observed band size: 42kDa

Note

For research use only .