

**Production Name:**GAPDH (12R9) Rabbit Monoclonal Antibody  
**Catalog#:** AMRe80004

---



## Summary

<b>Production Name</b>	GAPDH (12R9) Rabbit Monoclonal Antibody
<b>Host</b>	Monoclonal Rabbit
<b>Application</b>	WB,ELISA
<b>specificity</b>	endogenous
<b>Reactivity</b>	Human,Mouse,Rat,Rabbit,Dog,Monkey
<b>Isotype</b>	IgG1, Kappa
<b>Storage</b>	Store at 4°C short term. Aliquot and store at -20°C long term. Avoid freeze/thaw cycles.
<b>Buffer</b>	PBS, 50% glycerol, 0.05% Proclin 300, 0.05%BSA
<b>Purification</b>	Protein A

## Immunogen Information

<b>Gene Name</b>	GAPDH
<b>Immunogen</b>	Synthesized peptide derived from human protein. AA range:200-300

## Application

<b>Dilution Ratio</b>	WB 1:500-2000, ELISA 1:20000
-----------------------	------------------------------

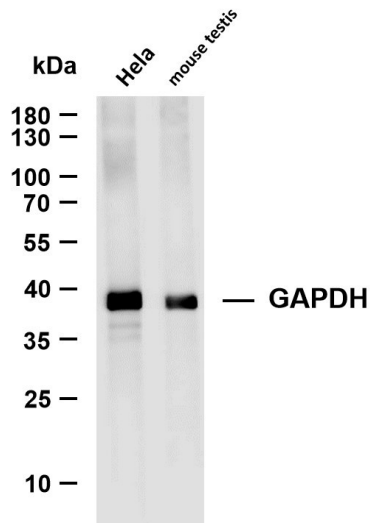
## Background

glyceraldehyde-3-phosphate dehydrogenase(GAPDH) Homo sapiens This gene encodes a member of the glyceraldehyde-3-phosphate dehydrogenase protein family. The encoded protein has been identified as a moonlighting protein based on its ability to perform mechanistically distinct functions. The product of this gene catalyzes an important energy-yielding step in carbohydrate metabolism, the reversible oxidative phosphorylation of glyceraldehyde-3-phosphate in the presence of inorganic phosphate and nicotinamide adenine dinucleotide (NAD). The encoded protein has additionally been identified to have uracil DNA glycosylase activity in the nucleus. Also, this protein contains a peptide that has antimicrobial activity against E. coli, P. aeruginosa, and C. albicans. Studies of a similar protein in mouse have assigned a variety of additional functions including nitrosylation of nuclear proteins, the regulation of mRNA stability, and acting as a transferri

## Image Data

**Production Name:**GAPDH (12R9) Rabbit Monoclonal Antibody  
**Catalog#:** AMRe80004

---



Various whole cell lysates were separated by 4-20% SDS-PAGE, and the membrane was blotted with GAPDH Rabbit Monoclonal Antibody. The HRP-conjugated Goat anti-Rabbit IgG(H + L) antibody was used to detect the antibody. Lane 1:PT0004R Lane 2: mouse testis Predicted band size: 37kDa Observed band size: 37kDa

## Note

For research use only .