

**Production Name:**  $\alpha$ -tubulin Monoclonal Antibody(8F11)  
**Catalog#:** AMM80017

---

## Summary

<b>Production Name</b>	$\alpha$ -tubulin Monoclonal Antibody(8F11)
<b>Host</b>	Mouse
<b>Application</b>	WB,IHC-p,IF,IP,Elisa
<b>specificity</b>	The antibody detects endogenous $\alpha$ -tubulin protein.
<b>Reactivity</b>	Human,Rat,Mouse
<b>Isotype</b>	
<b>Storage</b>	Store at 4°C short term. Aliquot and store at -20°C long term. Avoid freeze/thaw cycles.
<b>Buffer</b>	Liquid in PBS,pH 7.4, containing 50% glycerol , 2% BSA and New type preservative N.
<b>Purification</b>	The antibody was affinity-purified from mouse ascites by affinity-chromatography using specific immunogen.

## Immunogen Information

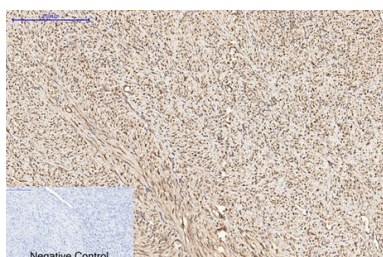
<b>Gene Name</b>	
<b>Immunogen</b>	Recombinant Protein of Tubulin alpha-1A chain

## Application

<b>Dilution Ratio</b>	WB 1:500-10000, IP 1:200, IF-P/IF-F/IF-ICC 1:200, IHC-P 1:50-300
-----------------------	--

## Background

## Image Data



Immunohistochemical analysis of paraffin-embedded Human-uterus-cancer tissue. 1,  $\alpha$ -tubulin Monoclonal Antibody(8F11) was diluted at 1:200(4°C,overnight). 2, Sodium citrate pH 6.0 was used for antibody retrieval(>98°C,20min). 3,Secondary



**Production Name:**  $\alpha$ -tubulin Monoclonal Antibody(8F11)  
**Catalog#:** AMM80017

---

antibody was diluted at 1:200(room temperature, 30min). Negative control was used by secondary antibody only.

### **Note**

For research use only .