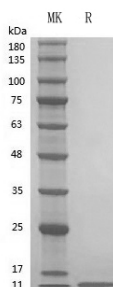


Summary

Name	Insulin
Purity	Greater than 98% as determined by reducing SDS-PAGE
Endotoxin level	≤10 EU/mg
Construction	Recombinant Human Insulin is produced by our Yeast expression system and the target gene encoding α chain : G-I-V-E-Q-C-C-T-S-I-C-S-L-Y-Q-L-E-N-Y-C-N & beta chain : F-V-N-Q-H-L-C-G-S-H-L-V-E-A-L-Y-L-V-C-G-E-R-G-F-F-Y-T-P-K-T is expressed.
Accession #	P01308
Host	Yeast
Species	Human
Predicted Molecular Mass	6 kDa
Formulation	Lyophilized From Acetic acid
Shipping	The product is shipped on dry ice/polar packs.Upon receipt, store it immediately at the temperature listed below.
Stability&Storage	Store at ≤-70°C, stable for 6 months after receipt.Store at ≤-70°C, stable for 3 months under sterile conditions after opening. Please minimize freeze-thaw cycles.
Reconstitution	Always centrifuge tubes before opening.Do not mix by vortex or pipetting.It is not recommended to reconstitute to a concentration less than 100µg/ml.Dissolve the lyophilized protein in distilled water.Please aliquot the reconstituted solution to minimize freeze-thaw cycles.Always centrifuge tubes before opening.Do not mix by vortex or pipetting.It is not recommended to reconstitute to a concentration less than 100µg/ml.Dissolve the lyophilized protein in distilled water.Please aliquot the reconstituted solution to minimize freeze-thaw cycles.

SDS-PAGE image



Product Name: Recombinant Human Insulin
Catalog #: PPH2528



Background

Alternative Names Insulin; INS; IDDM; ILPR; IRDN; MODY10

Background Insulin is a peptide hormone with 51 amino acids that plays a crucial role in regulating glucose homeostasis, cell growth, and metabolism . It is produced by the beta cells of the islets of Langerhans in the pancreas and is secreted in response to elevated blood glucose levels, such as after a meal . Insulin is synthesized as a prohormone called proinsulin, which consists of 110 amino acids. This is processed to proinsulin, which includes the A-chain, B-chain, and C-peptide, and is then further processed to the active form of insulin with the removal of the C-peptide.

Note

For Research Use Only , Not for Diagnostic Use.