

Product Name: Recombinant Cynomolgus CD226 (C-6His)
Catalog #: PHV2431

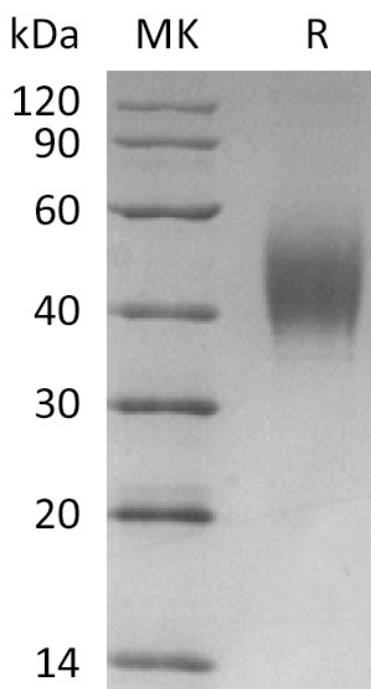


Summary

Name	CD226
Purity	Greater than 95% as determined by reducing SDS-PAGE
Endotoxin level	<1 EU/μg as determined by LAL test.
Construction	Recombinant Cynomolgus CD226 is produced by our Mammalian expression system and the target gene encoding Glu19-Asn247 is expressed with a 6His tag at the C-terminus.
Accession #	A0A2K5W1Z6
Host	Human Cells
Species	Cynomolgus
Predicted Molecular Mass	26.7 kDa
Formulation	Lyophilized from a 0.2 μm filtered solution of PBS, pH7.4.
Shipping	The product is shipped at ambient temperature. Upon receipt, store it immediately at the temperature listed below.
Stability&Storage	Store at ≤-70°C, stable for 6 months after receipt. Store at ≤-70°C, stable for 3 months under sterile conditions after opening. Please minimize freeze-thaw cycles.
Reconstitution	Always centrifuge tubes before opening. Do not mix by vortex or pipetting. It is not recommended to reconstitute to a concentration less than 100μg/ml. Dissolve the lyophilized protein in distilled water. Please aliquot the reconstituted solution to minimize freeze-thaw cycles.

SDS-PAGE image

Product Name: Recombinant Cynomolgus CD226 (C-6His)
Catalog #: PHV2431



Alternative Names

CD226 molecule; DNAM-1; CD226; DNAM1

Background

DNAX accessory molecule 1 (DNAM-1/CD226) is a type I transmembrane glycoprotein in the immunoglobulin superfamily. Mature human DNAM-1 contains an extracellular domain (ECD) with two Ig-like C2-set domains and a cytoplasmic region that contains motifs for binding PDZ domains and band 4.1 family proteins. DNAM-1 is expressed on multiple lymphoid and myeloid cells and interacts with CD155 and CD112. Ligation of DNAM-1 promotes the activation of NK cells, CD8+ T cells, and mast cells, dendritic cell maturation, megakaryocyte and activated platelet adhesion to vascular endothelial cells, and monocyte extravasation; it inhibits the formation of osteoclasts. Plateletendothelium, interactions mediated by DNAM-1, enable the metastasis of tumor cells to the lung.

Note

For Research Use Only , Not for Diagnostic Use.