

Product Name: Recombinant Cynomolgus IL-17F (C-6His)
Catalog #: PHV2346

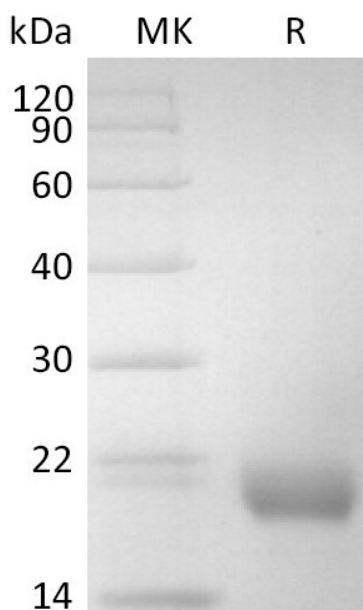


Summary

| | |
|---------------------------------|--|
| Name | IL-17F/Interleukin-17F |
| Purity | Greater than 95% as determined by reducing SDS-PAGE |
| Endotoxin level | <1 EU/μg as determined by LAL test. |
| Construction | Recombinant Cynomolgus Interleukin-17F is produced by our Mammalian expression system and the target gene encoding Arg31-Gln163 is expressed with a 6His tag at the C-terminus. |
| Accession # | G7P4V0 |
| Host | Human Cells |
| Species | Cynomolgus |
| Predicted Molecular Mass | 15.8 KDa |
| Formulation | Lyophilized from a 0.2 μm filtered solution of PBS, pH 7.4. |
| Shipping | The product is shipped at ambient temperature. Upon receipt, store it immediately at the temperature listed below. |
| Stability&Storage | Store at ≤-70°C, stable for 6 months after receipt. Store at ≤-70°C, stable for 3 months under sterile conditions after opening. Please minimize freeze-thaw cycles. |
| Reconstitution | Always centrifuge tubes before opening. Do not mix by vortex or pipetting. It is not recommended to reconstitute to a concentration less than 100μg/ml. Dissolve the lyophilized protein in distilled water. Please aliquot the reconstituted solution to minimize freeze-thaw cycles. |

SDS-PAGE image

Product Name: Recombinant Cynomolgus IL-17F (C-6His)
Catalog #: PHV2346



Alternative Names

Interleukin-17F; IL-17F; Cytokine ML-1; IL17F

Background

Interleukin-17F (IL-17F) exists in a disulfide-linked heterodimer that belongs to the IL-17 family. IL-17F is expressed in activated, but not resting, CD4⁺ T-cells and activated monocytes. IL-17F has been shown to stimulate the production of several other cytokines, including IL-6, IL-8, and granulocyte colony-stimulating factor. IL-17F can regulate cartilage matrix turnover and stimulates PBMC and T-cell proliferation. IL-17F is also found to inhibit the angiogenesis of endothelial cells and induce endothelial cells to produce IL2, TGFB1/TGFB, and monocyte chemoattractant protein-1. Defects in IL-17F are the cause of familial candidiasis type 6 (CANDF6).

Note

For Research Use Only , Not for Diagnostic Use.